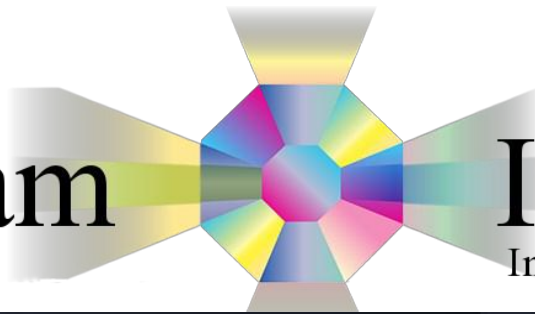


Sandream



Impact  
Inspiration Delivered



SYNTHETIC MICA PEARLESCENT PIGMENTS

## About Sandream Impact

Sandream Impact is a leading manufacturer and supplier of innovative effect pigments and unique cosmetic active ingredients. It was formed by the merger of Sandream Enterprises and Impact Colors Inc. January 2016. Our R&D and production site in our U.S. head office offers color matching, new color development, formulation, dispersion and blending and surface treatment services.

Our specialties include color travel pigments on various substrates, fluorophlogopite and aluminum based high definition colors, natural ester dispersed pigments, soft focus, bismuth powders, visual delivery systems and clinically proven anti-aging, whitening and brightening agents. From specialty pearl pigments to technical assistance and product development, Sandream Impact can accommodate the ever changing requirements of its customers in the cosmetic, personal care, plastics, and coatings industries.

For any questions or inquiries, please call +1 973 882 3077 or visit our website at [www.sandreamimpact.com](http://www.sandreamimpact.com).

## Mission Statement

Sandream Impact LLC delivers a full spectrum of color effect pigments, innovative cosmetic & industrial ingredients and visual delivery systems to the Color Cosmetics, Personal Care, Nutraceuticals, Cosmeceuticals, and Industrial Markets Worldwide. We are a team of passionate and enthusiastic experts focused on providing technically advanced products that will provide our customer base and the consumer marketplace with maximum visual impact and inspiration. We are committed to providing products that are environmentally safe, clean, consistent and effective. We are committed to ethical practices in our dealings with our customers, suppliers, staff and community at large.

## Content List

White/Silver Pigments	1
Interference Pigments	4
Gold Pigments	6
Metallic Pigments	7
Red/Pink Pigments	8
Green/Blue/Pigments	9
Yellow/Orange/Purple/Violet/Black/Gray Pigments	10
Duo-Chrome Pigments	12
Color Variable Pigments	12
Usage Guide	16

## Synthetic Mica Based Pigments

Sandream Impact's unique synthetic mica substrate is one of the most innovative technologies in the personal care industry. The company's process of creating synthetic mica produces an impressive variety of optical effects. Unlike mica which carries natural impurities along with it, the synthetic version is clean and much more transparent. This allows for more brilliant sparkle effects and for cleaner iridescent colors.

With an extremely low heavy metal profile, our pigments are an expressive, cost-effective way to add eye-catching brilliance. These are clear and sparkly colors on a high performance synthetic mica substrate that offer the chemist new tools for totally new effects.

The synthetic mica substrate imbues our specialty pigments, with unique features that offer application and marketing benefits to manufacturers and formulators. The Fluorophlogopites are finding increased acceptance in a wide variety of lip care applications where their intensity and purity are especially valued. In addition, they have become widely accepted for their use as a base for many new and unique color travel opportunities. There are no particle size restrictions on the use of the Synthetic Fluorophlogopite substrate in the eye area.

### Benefits:

- Provide a very clean and bright effect
- Alternative to expensive borosilicate pearl pigments
- Extremely low in heavy metal profile
- Surface treated synthetic pearls provide excellent pressability, long wear and durability
- < 15 um very light and smooth finish, ideal for face formulations
- 40 - 50 um ideal color payoff in eye and nail formulations

## White/Silver Pigments



**Fiesta Ultra Fine White**  
< 15µm



**Fiesta Shimmer White**  
25 - 100 µm



**Fiesta Silver Sparkle**  
30 - 160 µm



**Fiesta Sparkle White**  
50 - 250 µm

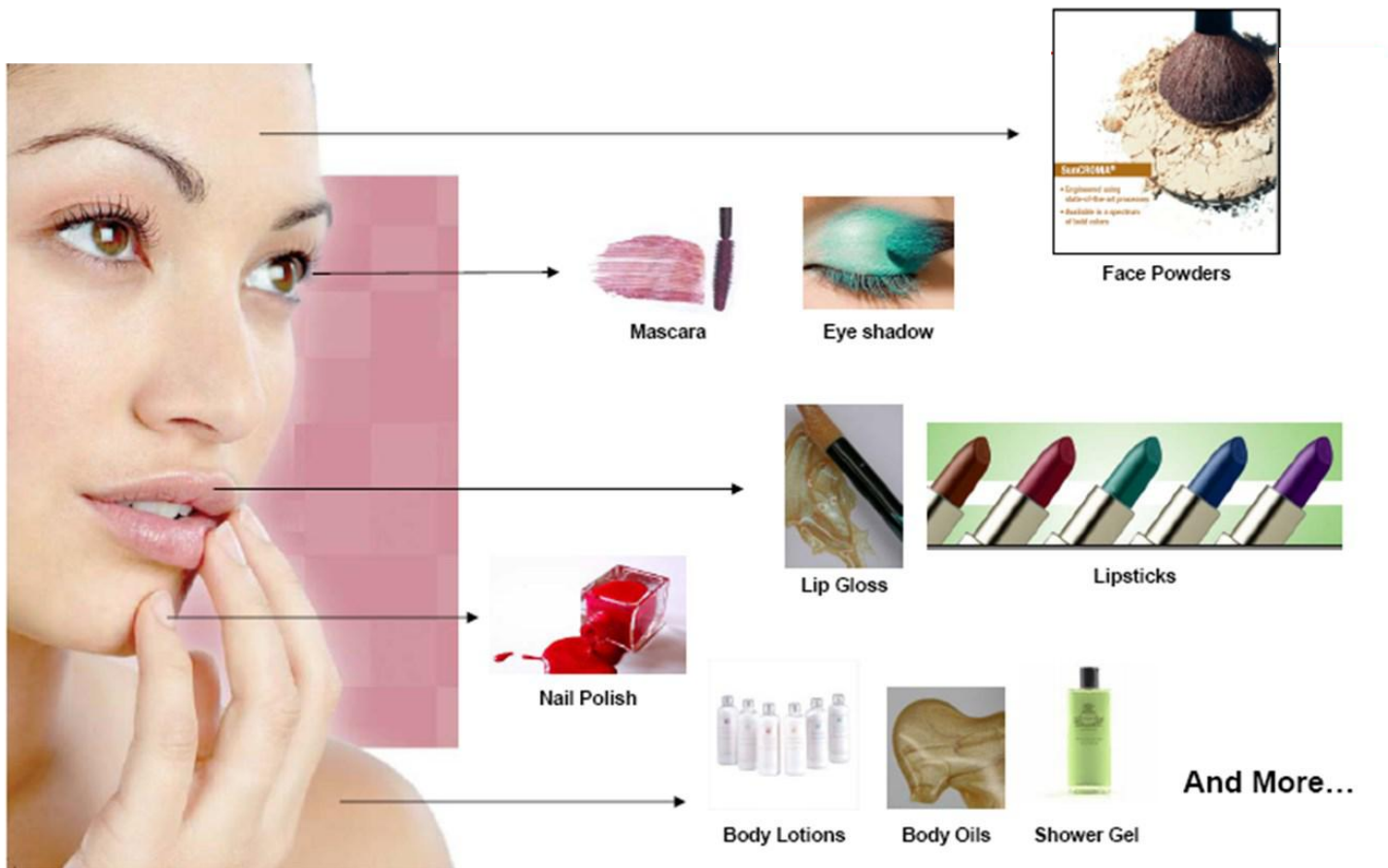


**Fiesta Maxima White**  
100 - 700 µm

Product	Code	INCI	Particle Size
Sachet Fine White	S1201	Synthetic Fluorophlogopite, TiO <sub>2</sub> , SnO <sub>2</sub>	5 - 25 µm
Sachet Classic White	S1001	Synthetic Fluorophlogopite, TiO <sub>2</sub> , SnO <sub>2</sub>	10 - 40 µm
Sachet Shimmer White	S1731	Synthetic Fluorophlogopite, TiO <sub>2</sub> , SnO <sub>2</sub>	20 - 100 µm
Sachet Flash White	S1531	Synthetic Fluorophlogopite, TiO <sub>2</sub> , SnO <sub>2</sub>	30 - 150 µm
Sachet Glitter White	S7010	Synthetic Fluorophlogopite, TiO <sub>2</sub>	50 - 250 µm
Sachet Splendid White	S1991	Synthetic Fluorophlogopite, TiO <sub>2</sub> , SnO <sub>2</sub>	200 - 1000 µm
Fiesta Ultra-Fine White	FWF-UFW	Synthetic Fluorophlogopite, TiO <sub>2</sub> , SnO <sub>2</sub>	< 15 µm
Fiesta Shimmer White	FI-8500	Synthetic Fluorophlogopite, TiO <sub>2</sub>	25 - 100 µm
Fiesta Flash White	FWM-FW	Synthetic Fluorophlogopite, TiO <sub>2</sub> , SnO <sub>2</sub>	30 - 150 µm
Fiesta Silver Sparkle	FW-8600K	Synthetic Fluorophlogopite, TiO <sub>2</sub>	30 - 160 µm
Fiesta Ultra Flash White	FWM-UF	Synthetic Fluorophlogopite, TiO <sub>2</sub> , SnO <sub>2</sub>	40 - 350 µm
Fiesta Sparkle White	FI-8800	Synthetic Fluorophlogopite, TiO <sub>2</sub>	50 - 250 µm
Fiesta Maxima White	FWX-MW	Synthetic Fluorophlogopite, TiO <sub>2</sub> , SnO <sub>2</sub>	100 - 700 µm

\*The pictures above are a representative selection of our pearl pigments. The additional products listed in the table differ primarily in particle size where a wide selection of images would be redundant. The basic color appearance will remain consistent across the particle size spectra.

## Pearlescent Pigments - Decorative Cosmetics



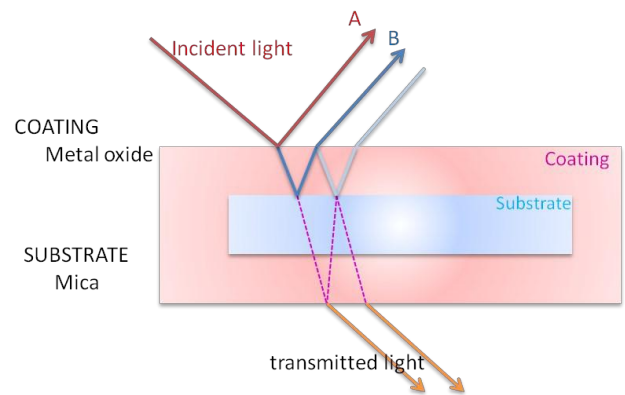
Pearlescent pigments are widely used in the cosmetic industry to add luster, sparkle, impart color or color-travel effects, and provide coverage. Pearls are used in many cosmetics applications including nail polish, eye shadow, lipstick, and blush.

Pearl pigments are also gaining wide acceptance in skin care applications, such as creams, lotions, and sun care where their addition significantly change and modify the skin tone in very subtle yet dynamic ways. Toiletries, such as cleansers, fragrances, toothpastes, antiperspirants and deodorants are adding a sparkle or interference luster to their appearance where eye appeal provides a unique distinction for other alternatives on the consumer shelves.

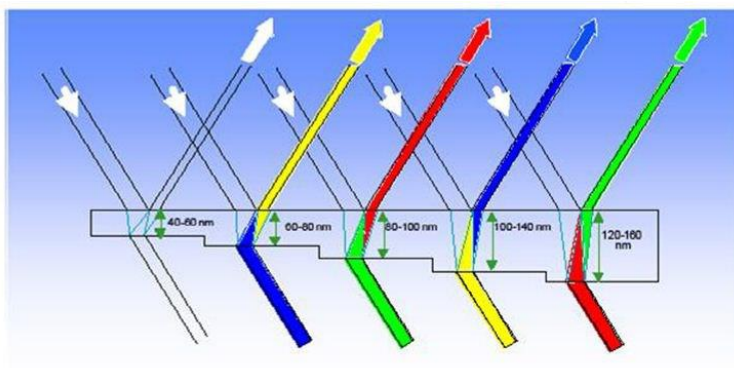
# Pearlescent Pigments - Technical Overview

Two parameters are critical to the pigment's appearance:

- Metal oxide layer thickness
- Lateral size of particle
  - Smaller are more satiny & opaque
  - Larger are more sparkly & transparent

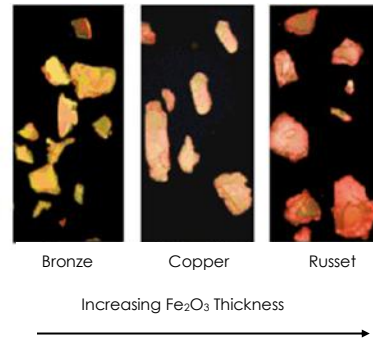
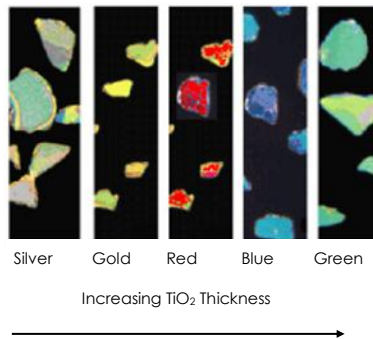


## Metal Oxide Layer Thickness

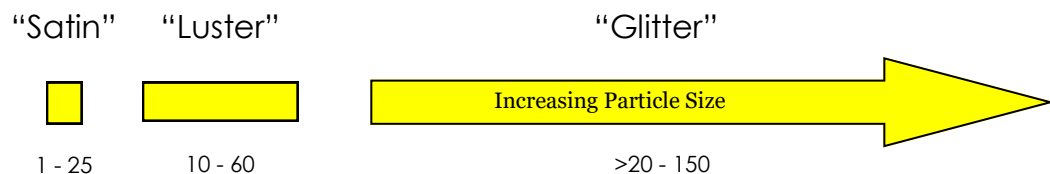


Thickness of the metal oxide layer determines the (reflected) interference color.

\* Note that the complementary color is transmitted



## Particle Size Effect



## Characteristics

- Semi-transparent
- Colors based on combination of light interference and absorption color of metal oxide layer
- Multiple surfaces of reflection give "pearl luster" finish

# Interference Pigments



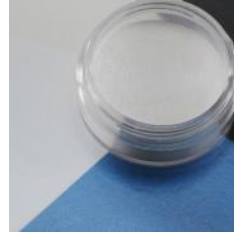
**Fiesta Satin Canary Gold**  
10 - 45 µm



**Fiesta Satin Fire Red**  
10 - 45 µm



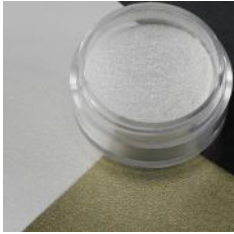
**Fiesta Satin Amethyst**  
10 - 45 µm



**Fiesta Satin Blue**  
10 - 45 µm



**Fiesta Satin Green**  
10 - 45 µm



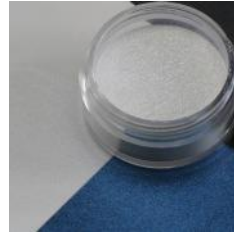
**Sachet Interference Gold**  
30 - 150 µm



**Sachet Interference Red**  
30 - 150 µm



**Sachet Interference Violet**  
30 - 150 µm



**Sachet Interference Blue**  
30 - 150 µm



**Sachet Interference Green**  
30 - 150 µm



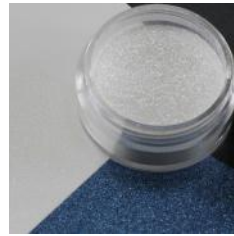
**Sachet Ultra Interference Gold**  
50 - 250 µm



**Sachet Ultra Interference Red**  
50 - 250 µm



**Sachet Ultra Interference Violet**  
50 - 250 µm



**Sachet Ultra Interference Blue**  
50 - 250 µm



**Sachet Ultra Interference Green**  
50 - 250 µm



**Sachet Glittering Gold**  
50 - 350 µm



**Sachet Glittering Red**  
50 - 350 µm



**Sachet Glittering Violet**  
50 - 350 µm



**Sachet Glittering Blue**  
50 - 350 µm



**Sachet Glittering Green**  
50 - 350 µm



**Sachet Maxima Interference Gold**  
200 - 700 µm



**Sachet Maxima Interference Red**  
200 - 700 µm



**Sachet Maxima Interference Violet**  
200 - 700 µm



**Sachet Maxima Interference Blue**  
200 - 700 µm

## Interference Pigments

Our Interference Pigments are an innovative line of synthetic mica-based pigments that deliver dynamic iridescent colors and effects, excellent value and advanced functionality without the risk of heavy metal. The synthetic mica substrate imbues our specialty pigments, with unique features that offer application and marketing benefits to manufacturers and formulators alike.

Product	Code	INCI	Particle Size
Sachet Smooth Interference Gold	S3053	Synthetic Fluorophlogopite, TiO <sub>2</sub> , SnO <sub>2</sub>	10 - 60 µm
Sachet Smooth Interference Red	S3153	Synthetic Fluorophlogopite, TiO <sub>2</sub> , SnO <sub>2</sub>	10 - 60 µm
Sachet Smooth Interference Violet	S3193	Synthetic Fluorophlogopite, TiO <sub>2</sub> , SnO <sub>2</sub>	10 - 60 µm
Sachet Smooth Interference Blue	S3253	Synthetic Fluorophlogopite, TiO <sub>2</sub> , SnO <sub>2</sub>	10 - 60 µm
Sachet Smooth Interference Green	S3353	Synthetic Fluorophlogopite, TiO <sub>2</sub> , SnO <sub>2</sub>	10 - 60 µm
Sachet Interference Gold	S2111	Synthetic Fluorophlogopite, TiO <sub>2</sub> , SnO <sub>2</sub>	30 - 150 µm
Sachet Interference Red	S2121	Synthetic Fluorophlogopite, TiO <sub>2</sub> , SnO <sub>2</sub>	30 - 150 µm
Sachet Interference Violet	S2131	Synthetic Fluorophlogopite, TiO <sub>2</sub> , SnO <sub>2</sub>	30 - 150 µm
Sachet Interference Blue	S2141	Synthetic Fluorophlogopite, TiO <sub>2</sub> , SnO <sub>2</sub>	30 - 150 µm
Sachet Interference Green	S2151	Synthetic Fluorophlogopite, TiO <sub>2</sub> , SnO <sub>2</sub>	30 - 150 µm
Sachet Ultra Interference Gold	S2010	Synthetic Fluorophlogopite, TiO <sub>2</sub> , SnO <sub>2</sub>	50 - 250 µm
Sachet Ultra Interference Red	S2020	Synthetic Fluorophlogopite, TiO <sub>2</sub> , SnO <sub>2</sub>	50 - 250 µm
Sachet Ultra Interference Violet	S2030	Synthetic Fluorophlogopite, TiO <sub>2</sub> , SnO <sub>2</sub>	50 - 250 µm
Sachet Ultra Interference Blue	S2040	Synthetic Fluorophlogopite, TiO <sub>2</sub> , SnO <sub>2</sub>	50 - 250 µm
Sachet Ultra Interference Green	S2050	Synthetic Fluorophlogopite, TiO <sub>2</sub> , SnO <sub>2</sub>	50 - 250 µm
Sachet Glittering Gold	S2211	Synthetic Fluorophlogopite, TiO <sub>2</sub> , SnO <sub>2</sub>	50 - 350 µm
Sachet Glittering Red	S2221	Synthetic Fluorophlogopite, TiO <sub>2</sub> , SnO <sub>2</sub>	50 - 350 µm
Sachet Glittering Violet	S2231	Synthetic Fluorophlogopite, TiO <sub>2</sub> , SnO <sub>2</sub>	50 - 350 µm
Sachet Glittering Blue	S2241	Synthetic Fluorophlogopite, TiO <sub>2</sub> , SnO <sub>2</sub>	50 - 350 µm
Sachet Glittering Green	S2251	Synthetic Fluorophlogopite, TiO <sub>2</sub> , SnO <sub>2</sub>	50 - 350 µm
Sachet Maxima Interference Gold	S2711	Synthetic Fluorophlogopite, TiO <sub>2</sub> , SnO <sub>2</sub>	200 - 700 µm
Sachet Maxima Interference Red	S2721	Synthetic Fluorophlogopite, TiO <sub>2</sub> , SnO <sub>2</sub>	200 - 700 µm
Sachet Maxima Interference Violet	S2731	Synthetic Fluorophlogopite, TiO <sub>2</sub> , SnO <sub>2</sub>	200 - 700 µm
Sachet Maxima Interference Blue	S2741	Synthetic Fluorophlogopite, TiO <sub>2</sub> , SnO <sub>2</sub>	200 - 700 µm
Sachet Splendid Kaleidoscope	S1999	Synthetic Fluorophlogopite, TiO <sub>2</sub> , SnO <sub>2</sub>	200 - 1000 µm
Fiesta Sharp Gold	FI-4501	Synthetic Fluorophlogopite, TiO <sub>2</sub> , SnO <sub>2</sub>	10 - 45 µm
Fiesta Sharp Red	FI-4502	Synthetic Fluorophlogopite, TiO <sub>2</sub> , SnO <sub>2</sub>	10 - 45 µm
Fiesta Sharp Violet	FI-4503	Synthetic Fluorophlogopite, TiO <sub>2</sub> , SnO <sub>2</sub>	10 - 45 µm
Fiesta Sharp Blue	FI-4504	Synthetic Fluorophlogopite, TiO <sub>2</sub> , SnO <sub>2</sub>	10 - 45 µm
Fiesta Sharp Green	FI-4505	Synthetic Fluorophlogopite, TiO <sub>2</sub> , SnO <sub>2</sub>	10 - 45 µm
Fiesta Satin Canary Gold	FI-8205	Synthetic Fluorophlogopite, TiO <sub>2</sub> , SnO <sub>2</sub>	10 - 45 µm
Fiesta Satin Fire Red	FI-8215	Synthetic Fluorophlogopite, TiO <sub>2</sub> , SnO <sub>2</sub>	10 - 45 µm
Fiesta Satin Amethyst	FI-8219	Synthetic Fluorophlogopite, TiO <sub>2</sub> , SnO <sub>2</sub>	10 - 45 µm
Fiesta Satin Blue	FI-8225	Synthetic Fluorophlogopite, TiO <sub>2</sub> , SnO <sub>2</sub>	10 - 45 µm
Fiesta Satin Green	FI-8235	Synthetic Fluorophlogopite, TiO <sub>2</sub> , SnO <sub>2</sub>	10 - 45 µm
Fiesta Shimmer Canary Gold	FI-8505	Synthetic Fluorophlogopite, TiO <sub>2</sub> , SnO <sub>2</sub>	25 - 100 µm
Fiesta Shimmer Fire Red	FI-8515	Synthetic Fluorophlogopite, TiO <sub>2</sub> , SnO <sub>2</sub>	25 - 100 µm
Fiesta Shimmer Amethyst	FI-8519	Synthetic Fluorophlogopite, TiO <sub>2</sub> , SnO <sub>2</sub>	25 - 100 µm
Fiesta Shimmer Blue	FI-8525	Synthetic Fluorophlogopite, TiO <sub>2</sub> , SnO <sub>2</sub>	25 - 100 µm
Fiesta Shimmer Green	FI-8535	Synthetic Fluorophlogopite, TiO <sub>2</sub> , SnO <sub>2</sub>	25 - 100 µm

# Gold Pigments



**Sachet Light Gold**  
10 - 60 µm



**Sachet Sparkling Light Gold**  
40 - 200 µm



**Sachet Light Gold-700**  
60 - 700 µm



**Sachet Super Gold-700**  
200 - 700 µm



**Sachet Splendid Gold**  
200 - 1000 µm



**Sachet Splendid Red Gold**  
200 - 1000 µm



**Fiesta Fine Gold**  
10 - 60 µm



**Fiesta Super Gold**  
20 - 200 µm



**Fiesta Gold Sparkle**  
50 - 250 µm

Product	Code	INCI	Particle Size
Sachet Light Gold	S9112	Synthetic Fluorphlogopite, Iron Oxides, TiO <sub>2</sub>	10 - 60 µm
Sachet Sparkling Light Gold	S9002	Synthetic Fluorphlogopite, Iron Oxides, TiO <sub>2</sub> , SnO <sub>2</sub>	40 - 200 µm
Sachet Light Gold-700	S6014	Synthetic Fluorphlogopite, TiO <sub>2</sub> , SnO <sub>2</sub> , Iron Oxides	60 - 700 µm
Sachet Super Gold-700	S4431	Synthetic Fluorphlogopite, Iron Oxides, Silica	200 - 700 µm
Sachet Splendid Gold	S4901	Synthetic Fluorphlogopite, Iron Oxides, Silica	200 - 1000 µm
Sachet Splendid Red Gold	S4911	Synthetic Fluorphlogopite, Iron Oxides, Silica	200 - 1000 µm
Fiesta Velvet Gold	FCV-VGLD	Synthetic Fluorphlogopite, Iron Oxides, TiO <sub>2</sub> , SnO <sub>2</sub>	< 15 µm
Fiesta Fine Gold	FCM-FGLD	Synthetic Fluorphlogopite, Iron Oxides, TiO <sub>2</sub>	10 - 60 µm
Fiesta Super Gold	FGL-SG	Synthetic Fluorphlogopite, Iron Oxides, Silica	20 - 200 µm
Fiesta Gold Sparkle	FI-8856	Synthetic Fluorphlogopite, TiO <sub>2</sub> , Iron Oxides	50 - 250 µm



# Metallic Pigments



**Sachet Bronze**  
10 - 60 µm



**Sachet Opal**  
9- 50 µm



**Sachet Sparkling Bronze**  
40 - 200 µm



**Sachet Russet-700**  
60 - 700 µm



**Sachet Copper-700**  
60 - 700 µm



**Sachet Bronze-700**  
60 - 700 µm



**Sachet Splendid Copper**  
200 - 1000 µm



**Fiesta Bronze Shimmer**  
25- 100µm

Product	Code	INCI	Particle Size
Sachet Bronze	S5002	Synthetic Fluorphlogopite, Iron Oxides	10 - 60 µm
Sachet Opal	S9044	Synthetic Fluorphlogopite, TiO <sub>2</sub> , Iron Oxides	09 - 50 µm
Sachet Sparkling Bronze	S9502	Synthetic Fluorphlogopite, Iron Oxides	40 - 200 µm
Sachet Russet-700	S6604	Synthetic Fluorphlogopite, Iron Oxides	60 - 700 µm
Sachet Copper-700	S6404	Synthetic Fluorphlogopite, Iron Oxides	60 - 700 µm
Sachet Bronze-700	S6204	Synthetic Fluorphlogopite, Iron Oxides	60 - 700 µm
Sachet Splendid Copper	S4931	Synthetic Fluorphlogopite, Iron Oxides	200 - 1000 µm
Fiesta Velvet Bronze	FCV-VBRZ	Synthetic Fluorphlogopite, Iron Oxides, Silica	< 15 µm
Fiesta Fine Bronze	FCM-FBRZ	Synthetic Fluorphlogopite, TiO <sub>2</sub>	10 - 60 µm
Fiesta Bronze Shimmer	FI-8530	Synthetic Fluorphlogopite, Iron Oxides	25 - 100 µm



## Red /Pink Pigments



**Sachet Crimson Red**  
10 - 45 µm



**Sachet Violet Red**  
10 - 60 µm



**Sachet Maroon**  
10 - 60 µm



**Sachet Purple Red**  
10 - 60 µm



**Sachet TC Swift Light Red**  
10 - 60 µm



**Sachet TC Swift Peach**  
10 - 60 µm



**Smokey Glimmering Peach Copper** 40 - 150 µm



**Sachet Sparkling Violet Red** 40 - 200 µm



**Sachet Power Red 700**  
200 - 700 µm



**Sachet Splendid Red**  
200- 1000 µm



**Fiesta Velvet Red Brown**  
1-10 µm



**Fiesta Velvet Cabernet**  
1-10 µm



**Fiesta Wine Red Glitter**  
25 - 100 µm



**Fiesta Starlight Power Red**  
30 - 150 µm



**Fiesta Smokey Amethyst**  
40 - 150 µm



**Fiesta Velvet Wine Red**  
1-15 µm



**Fiesta Fine Wine Red**  
10 - 60 µm



**Fiesta Copper Coral**  
10 - 125 µm



**Fiesta Orchid Carmine**  
10 - 125 µm



**Fiesta Frosted Carmine**  
10 - 125 µm

Product	Code	INCI	Particle Size
Sachet Crimson Red	SCS-845	Synthetic Fluorphlogopite, Iron Oxides	10 - 45 µm
Sachet Smooth Red	S5022	Synthetic Fluorphlogopite, Iron Oxides	10 - 60 µm
Sachet Violet Red	S5042	Synthetic Fluorphlogopite, Iron Oxides	10 - 60 µm
Sachet Maroon	S5542	Synthetic Fluorphlogopite, Iron Oxides	10 - 60 µm
Sachet Purple Red	S8154	Synthetic Fluorphlogopite, TiO <sub>2</sub> , Carmine, Ferric Ferrocyanide, SnO <sub>2</sub>	10 - 60 µm
Sachet TC Swift Light Red	S6802RC	Synthetic Fluorphlogopite, TiO <sub>2</sub> , Carmine, SnO <sub>2</sub>	10 - 60 µm
Sachet TC Swift Peach	S6949	Synthetic Fluorphlogopite, TiO <sub>2</sub> , Iron Oxides, SnO <sub>2</sub>	10 - 60 µm
Smokey Glimmering Peach Copper	S8591C	Synthetic Fluorphlogopite, TiO <sub>2</sub> , Black 2, SnO <sub>2</sub>	40 - 150 µm
Sachet Sparkling Violet Red	S9542	Synthetic Fluorphlogopite, Iron Oxides	40 - 200 µm
Sachet Power Red-700	S4421	Synthetic Fluorphlogopite, Iron Oxides	200 - 700 µm
Sachet Splendid Red	S4921	Synthetic Fluorphlogopite, Iron Oxides	200 - 1000 µm
Fiesta Velvet Red Brown	FCF-RB	Synthetic Fluorphlogopite, Iron Oxides	1-10 µm
Fiesta Velvet Cabernet	FCF-VC	Synthetic Fluorphlogopite, Iron Oxides	1-10 µm
Fiesta Velvet Wine Red	FCV-VWR	Synthetic Fluorphlogopite, Iron Oxides, Silica	1-15 µm
Fiesta Fine Wine Red	FCM-FWR	Synthetic Fluorphlogopite, Iron Oxides	10 - 60 µm
Fiesta Copper Coral	FCL-CCO	Synthetic Fluorphlogopite, TiO <sub>2</sub> , Red 40 Al Lake, SnO <sub>2</sub>	10 - 125 µm
Fiesta Orchid Carmine	FCL-OCar	Synthetic Fluorphlogopite, TiO <sub>2</sub> , Carmine, SnO <sub>2</sub>	10 - 125 µm
Fiesta Frosted Carmine	FCL-FCar	Synthetic Fluorphlogopite, TiO <sub>2</sub> , Carmine, SnO <sub>2</sub>	10 - 125 µm

## Red /Pink Pigments



**Fiesta Wine Red Glitter**  
25 - 100 µm



**Fiesta Starlight Power Red**  
30 - 150 µm



**Fiesta Smokey Amethyst**  
40 - 150 µm

Product	Code	INCI	Particle Size
Fiesta Wine Red Glitter	FI-8534	Synthetic Fluorophlogopite, Iron Oxides	25 - 100 µm
Fiesta Starlight Power Red	FCM-PR	Synthetic Fluorophlogopite, Iron Oxides	30 - 150 µm
Fiesta Smokey Amethyst	FCM-SAm	Synthetic Fluorophlogopite, TiO <sub>2</sub> , Black 2, SnO <sub>2</sub>	40 - 150 µm

## Green Pigments



**Sachet Green**  
10 - 60 µm



**Sachet Opal Coral Green**  
30 - 150 µm



**Sachet Opal Lemon Green**  
30 - 150 µm



**Smokey Glim. Ench. Green**  
40 - 150 µm



**Fiesta Powder Kiwi**  
10 - 45 µm



**Fiesta Powder Lime**  
10 - 45 µm



**Fiesta Smokey Jade**  
40 - 150 µm

Product	Code	INCI	Particle Size
Sachet Green	S7454	Synthetic Fluorophlogopite, TiO <sub>2</sub> , Iron Oxides, Ferric Ferrocyanide, SnO <sub>2</sub>	10 - 60 µm
Sachet Opal Coral-Green	S2972	Synthetic Fluorophlogopite, TiO <sub>2</sub> , Silica, SnO <sub>2</sub> , Red 40	30 - 150 µm
Sachet Opal Lemon-Green	S2992	Synthetic Fluorophlogopite, TiO <sub>2</sub> , Silica, SnO <sub>2</sub> , Yellow 5	30 - 150 µm
Smokey Glimmering Enchanted Green	S8991B	Synthetic Fluorophlogopite, TiO <sub>2</sub> , Ferric Ferrocyanide, SnO <sub>2</sub>	40 - 150 µm
Fiesta Powder Kiwi	FCF-PK	Synthetic Fluorophlogopite, Yellow 5, Blue 1	10 - 45 µm
Fiesta Powder Lime	FCF-PL	Synthetic Fluorophlogopite, Yellow 5, Blue 1	10 - 45 µm
Fiesta Smokey Jade	FCM-SJD	Synthetic Fluorophlogopite, TiO <sub>2</sub> , Black 2, SnO <sub>2</sub>	40 - 150 µm

## Blue Pigments



**Smokey Vintage Blue**  
4 - 24 µm



**Sachet Brilliant Blue**  
9 - 50 µm



**Sachet Caribbean Blue**  
20 - 100 µm



**Fiesta Ocean Topaz**  
40 - 150 µm

Product	Code	INCI	Particle Size
Smokey Vintage Blue	S9014	Synthetic Fluorophlogopite, TiO <sub>2</sub> , SnO <sub>2</sub>	4 - 24 µm
Sachet Brilliant Blue	S7883S	Synthetic Fluorophlogopite, TiO <sub>2</sub> , Ferric Ferrocyanide, SnO <sub>2</sub>	9 - 50 µm
Sachet Caribbean Blue	S6852	Synthetic Fluorophlogopite, TiO <sub>2</sub> , Green 5	20-100 µm
Fiesta Ocean Topaz	FCM-SOT	Synthetic Fluorophlogopite, TiO <sub>2</sub> , Ferric Ferrocyanide, SnO <sub>2</sub>	40 - 150 µm

## Black/Gray Pigments



**Sachet Midnight Red**  
8 - 50 µm



**Smokey Vintage Black**  
10 - 45 µm



**Sachet Silver Grey**  
10 - 60 µm

Product	Code	INCI	Particle Size
Sachet Midnight Red	S7844	Synthetic Fluorophlogopite, SnO <sub>2</sub> , TiO <sub>2</sub> , TiO <sub>2</sub> Black	8 - 50 µm
Smokey Vintage Black	S14023	Synthetic Fluorophlogopite, Iron Oxides, TiO <sub>2</sub>	10 - 45 µm
Sachet Silver Grey	S9154	Synthetic Fluorophlogopite, TiO <sub>2</sub> , TiO <sub>2</sub> Black	10 - 60 µm

## Yellow/Orange Pigments



**Sachet TC Swift Yellow**  
10 - 60 µm



**Fiesta Sunny Yellow**  
10 - 125 µm



**Fiesta Corona. Sun. Orange**  
<10 µm

Product	Code	INCI	Particle Size
Sachet TC Swift Yellow	S6909Y	Synthetic Fluorophlogopite, TiO <sub>2</sub> , Yellow 5 Al Lake, SnO <sub>2</sub>	10 - 60 µm
Fiesta Corona Sunset Orange	FCF-SO	Synthetic Fluorophlogopite, Iron Oxides, TiO <sub>2</sub>	<10 µm
Fiesta Sunny Yellow	FCL-SY	Synthetic Fluorophlogopite, TiO <sub>2</sub> , Yellow 5 Al Lake	10 - 125 µm

## Purple/Violet Pigments



**Sachet Lilac**  
10 - 60 µm



**Sachet Light Violet**  
10 - 125 µm



**Smokey Glim. Sunset Purple**  
40 - 150 µm



**Fiesta Royal Plum**  
40 - 150 µm

Product	Code	INCI	Particle Size
Sachet Lilac	S7254	Synthetic Fluorophlogopite, TiO <sub>2</sub> , Carmine, Fe. Ferrocyanide, SnO <sub>2</sub>	10 - 60 µm
Sachet Light Violet	S6439V	Synthetic Fluorophlogopite, TiO <sub>2</sub> , Manganese Violet, SnO <sub>2</sub>	10 - 125 µm
Smokey Glimmering Sunset Purple	S8691B	Synthetic Fluorophlogopite, TiO <sub>2</sub> , Ferric Ferrocyanide, SnO <sub>2</sub>	40 - 150 µm
Fiesta Frosted Lavender	FCL-FLav	Synthetic Fluorophlogopite, TiO <sub>2</sub> , Manganese Violet, SnO <sub>2</sub>	10 - 125 µm
Fiesta Royal Plum	FCM-SRP	Synthetic Fluorophlogopite, TiO <sub>2</sub> , Ferric Ferrocyanide, SnO <sub>2</sub>	40 - 150 µm

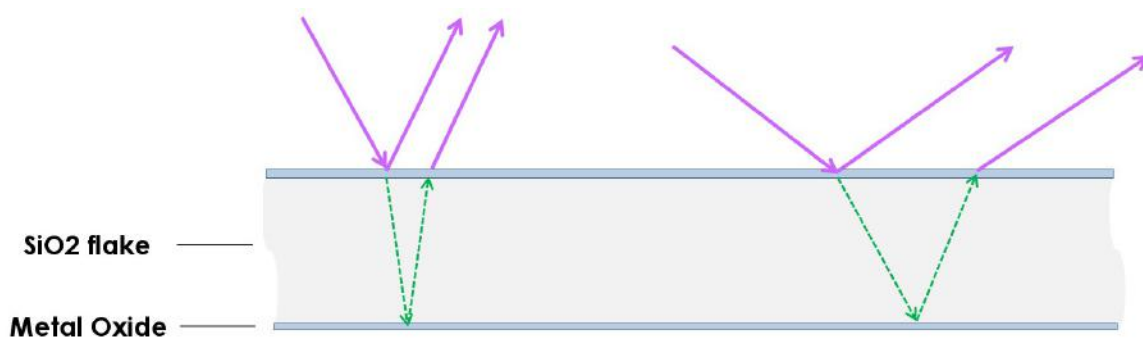
## Color Variable Pigments

The technology behind Color Travel Pigments is the use of thin, precisely controlled coatings of titanium dioxide, or iron oxide, silica and tin oxide on synthetic fluorophlogopite platelets to separate white light into multiple component parts and produce up to four interference colors: three by reflection and one by transmission.

For a thin platelet, such as silica flakes, light passing from the air into the silica flake is partly reflected at the interface between the air and the silica flake (due to a higher refractive index). The rest of the light is refracted and transmitted to the bottom interface of silica, where part of the light is reflected again, back to the top surface. The smooth surface of these synthetic fluorophlogopite flakes produces a neutral mass tone, increased transparency, and notable color intensity.

In the case of a system consisting of three thin layers of metal oxide coated silica flakes, the thickness of the silica layer will influence the path length of light. If the incident light is at a sharper or wider angle this directly effects the wavelength, resulting in different reflected colors.

These pigments are achromatic, highly transparent and have homogenous particle thickness. The transparency of the material allows for



Due to the **thickness of the silica layer**, the **path length (directly related to the color)** of the reflected light differs significantly.

If the incident light is at a sharper or wider angle, **the reflected light will have differing wavelengths of reflected light => different reflected colors.**

Variations in structure (silica thickness, mica/silica combinations, etc.) will lead to a range of pigments with a variety of color-travel behaviors.

### **General Rules for using color-travel pigments in cosmetics:**

- "Formulation-dependent"; so trial-and-error still necessary
- Fluid applications (liquids, gels) always show off travel effect better
- Avoid complementary interference pigments
- Less is more: the more transparent the formula, the better the effect
  - > Mass-tone pigments: more transparency gives better a effect
  - > Large sized mass-tone pigments can be combined with color-travel pigments to create very interesting effects
- Very large-sized color travel pigments (20 - 200 microns) can be used to provide both color-travel and sparkle in ways previously unavailable to the cosmetic formulator.

## Duo-Chrome Pigments



**Sachet Duo R/B**  
10 - 60 µm



**Sachet Duo V/G**  
10 - 60 µm



**Fiesta Red Rouge**  
10 - 60 µm



**Fiesta Golden Rouge**  
10 - 60 µm



**Fiesta Violet Rouge**  
10 - 60 µm

Product	Code	INCI	Particle Size
Sachet Duo R/B	S8254	Synthetic Fluorphlogopite, TiO <sub>2</sub> , Carmine, SnO <sub>2</sub>	10 - 60 µm
Sachet Duo VG	S63353	Synthetic Fluorphlogopite, TiO <sub>2</sub> , Iron Oxides, Ferric Ferrocyanide	10 - 60 µm
Fiesta Red Rouge	FCM-RR	Synthetic Fluorphlogopite, TiO <sub>2</sub> , Iron Oxides, SnO <sub>2</sub>	10 - 60 µm
Fiesta Golden Rouge	FCM-GR	Synthetic Fluorphlogopite, TiO <sub>2</sub> , Iron Oxides, SnO <sub>2</sub>	10 - 60 µm
Fiesta Violet Rouge	FCM-VR	Synthetic Fluorphlogopite, TiO <sub>2</sub> , Iron Oxides, SnO <sub>2</sub>	10 - 60 µm

## Color Variable Pigments



**Fiesta Gemini YGB-24**  
40 - 150 µm



**Fiesta Gemini ROG-25**  
40 - 150 µm



**Fiesta Gemini ROY-26**  
40 - 150 µm



**Fiesta Gemini VRO-27**  
40 - 150 µm



**Fiesta Gemini BRO-28**  
40 - 150 µm



**Fiesta Gemini BVR-29**  
40 - 150 µm



**Fiesta Gemini OV-37**  
50 - 200 µm



**Fiesta Gemini GR-37**  
50 - 200 µm



Product	Code	INCI	Particle Size
Fiesta Gemini YGB-24	FGM-YGB24	Synthetic Fluorphlogopite, Iron Oxides, Silica	40 - 150 µm
Fiesta Gemini ROG-25	FGM-ROG25	Synthetic Fluorphlogopite, Iron Oxides, Silica	40 - 150 µm
Fiesta Gemini ROY-26	FGM-ROY26	Synthetic Fluorphlogopite, Iron Oxides, Silica	40 - 150 µm
Fiesta Gemini VRO-27	FGM-VRO27	Synthetic Fluorphlogopite, Iron Oxides, Silica	40 - 150 µm
Fiesta Gemini BRO-28	FGM-BRO28	Synthetic Fluorphlogopite, Iron Oxides, Silica	40 - 150 µm
Fiesta Gemini BVR-29	FGM-BVR29	Synthetic Fluorphlogopite, Iron Oxides, Silica	40 - 150 µm
Fiesta Gemini YGB-44	FGM-YGB44	Synthetic Fluorphlogopite, Iron Oxides, Silica	100 - 260 µm
Fiesta Gemini ROG-45	FGM-ROG45	Synthetic Fluorphlogopite, Iron Oxides, Silica	100 - 260 µm
Fiesta Gemini ROY-46	FGM-ROY46	Synthetic Fluorphlogopite, Iron Oxides, Silica	100 - 260 µm
Fiesta Gemini VRO-47	FGM-VRO47	Synthetic Fluorphlogopite, Iron Oxides, Silica	100 - 260 µm
Fiesta Gemini BRO-48	FGM-BRO48	Synthetic Fluorphlogopite, Iron Oxides, Silica	100 - 260 µm
Fiesta Gemini BVR-49	FGM-BVR49	Synthetic Fluorphlogopite, Iron Oxides, Silica	100 - 260 µm
Fiesta Gemini OV-37	FGM-OV37	Synthetic Fluorphlogopite, Iron Oxides, Silica	50 - 200 µm
Fiesta Gemini GR-37	FGM-GR37	Synthetic Fluorphlogopite, Iron Oxides, Silica	50 - 200 µm

## Color Variable Pigments



**SynMira Shimmer GBV8765**  
20 – 80 µm



**SynMira Shimmer ROY8598**  
20 – 80 µm



**SynMira Shimmer VRO8987**  
20 – 80 µm



**SynMira Shimmer TVR8379**  
20 – 80 µm



**SynMira Blue BGG**  
25 - 95 µm



**SynMira Blue GRV**  
25 - 95 µm



**SynMira Blue GVB**  
25 - 95 µm



**SynMira Blue RVB**  
25 - 95 µm



**SynMira Blue VBG**  
25 - 95 µm

Product	Code	INCI	Particle Size
SynMira Shimmer VRO8987	SM8987	Synthetic Fluorphlogopite, TiO <sub>2</sub> , SnO <sub>2</sub> , SiO <sub>2</sub> , Iron Oxides	20 - 80 µm
SynMira Shimmer GBV8765	SM8765	Synthetic Fluorphlogopite, TiO <sub>2</sub> , SnO <sub>2</sub> , SiO <sub>2</sub> , Iron Oxides	20 - 80 µm
SynMira Shimmer ROY8598	SM8598	Synthetic Fluorphlogopite, TiO <sub>2</sub> , SnO <sub>2</sub> , SiO <sub>2</sub> , Iron Oxides	20 - 80 µm
SynMira Shimmer TVR8379	SM8379	Synthetic Fluorphlogopite, TiO <sub>2</sub> , SnO <sub>2</sub> , SiO <sub>2</sub> , Iron Oxides	20 - 80 µm
SynMira Blue BGG	S8265J	Synthetic Fluorphlogopite, TiO <sub>2</sub> , SiO <sub>2</sub> , Ferric Ferrocyanide	25 - 95 µm
SynMira Blue GRV	S8269J	Synthetic Fluorphlogopite, TiO <sub>2</sub> , SiO <sub>2</sub> , Ferric Ferrocyanide	25 - 95 µm
SynMira Blue GVB	S8268J	Synthetic Fluorphlogopite, TiO <sub>2</sub> , SiO <sub>2</sub> , Ferric Ferrocyanide	25 - 95 µm
SynMira Blue RVB	S8267J	Synthetic Fluorphlogopite, TiO <sub>2</sub> , SiO <sub>2</sub> , Ferric Ferrocyanide	25 - 95 µm
SynMira Blue VBG	S8266J	Synthetic Fluorphlogopite, TiO <sub>2</sub> , SiO <sub>2</sub> , Ferric Ferrocyanide	25 - 95 µm
SynMira Silver Gold	S73929	Synthetic Fluorphlogopite, TiO <sub>2</sub> , SiO <sub>2</sub> , SnO <sub>2</sub>	80 - 180 µm

\*The photographs in this section offer two views of our pigments. The top view shows the appearance of our pigments with a reflective angle of approximately 45 degrees or higher. In order to show the actual color travel, we have shown our pigments photographed over a curved surface. Hence you can visualize how the color shifts from one color to several as the viewing angle changes along the curve. The photo represents the color coated over a black substrate to maximize the color travel effects.

# Color Variable Pigments



**SynMira-Ice BVR989**  
30 - 120 µm



**SynMira-Ice BRO988**  
30 - 120 µm



**SynMira-Ice VRO987**  
30 - 120 µm



**SynMira-Ice ROY986**  
30 - 120 µm



**SynMira-Ice ROG985**  
30 - 120 µm



**SynMira-Ice YGB984**  
30 - 120 µm



**SynMira-Ice BVR929**  
80 - 180 µm



**SynMira-Ice BRO928**  
80 - 180 µm



**SynMira-Ice VRO927**  
80 - 180 µm



**SynMira-Ice ROY926**  
80 - 180 µm



**SynMira-Ice ROG925**  
80 - 180 µm



**SynMira-Ice YGB924**  
80 - 180 µm



**SynMira-Ice BVR849**  
100 - 260 µm



**SynMira-Ice BRO848**  
100 - 260 µm



**SynMira-Ice VRO847**  
100 - 260 µm



**SynMira-Ice ROY846**  
100 - 260 µm



**SynMira-Ice ROG845**  
100 - 260 µm



**SynMira-Ice YGB844**  
100 - 260 µm

## Color Variable Pigments

Product	Code	INCI	Particle Size
SynMira-Ice BVR989	SM9890	Synthetic Fluorphlogopite, Silica, TiO <sub>2</sub> , SnO <sub>2</sub>	30 - 120 µm
SynMira-Ice BRO988	SM9880	Synthetic Fluorphlogopite, Silica, TiO <sub>2</sub> , SnO <sub>2</sub>	30 - 120 µm
SynMira-Ice VRO987	SM9870	Synthetic Fluorphlogopite, Silica, TiO <sub>2</sub> , SnO <sub>2</sub>	30 - 120 µm
SynMira-Ice ROY986	SM9860	Synthetic Fluorphlogopite, Silica, TiO <sub>2</sub> , SnO <sub>2</sub>	30 - 120 µm
SynMira-Ice ROG985	SM9850	Synthetic Fluorphlogopite, Silica, TiO <sub>2</sub> , SnO <sub>2</sub>	30 - 120 µm
SynMira-Ice YGB984	SM9840	Synthetic Fluorphlogopite, Silica, TiO <sub>2</sub> , SnO <sub>2</sub>	30 - 120 µm
SynMira-Ice BVR929	SM9290	Synthetic Fluorphlogopite, Silica, TiO <sub>2</sub> , SnO <sub>2</sub>	80 - 180 µm
SynMira-Ice BRO928	SM9280	Synthetic Fluorphlogopite, Silica, TiO <sub>2</sub> , SnO <sub>2</sub>	80 - 180 µm
SynMira-Ice VRO927	SM9270	Synthetic Fluorphlogopite, Silica, TiO <sub>2</sub> , SnO <sub>2</sub>	80 - 180 µm
SynMira-Ice ROY926	SM9260	Synthetic Fluorphlogopite, Silica, TiO <sub>2</sub> , SnO <sub>2</sub>	80 - 180 µm
SynMira-Ice ROG925	SM9250	Synthetic Fluorphlogopite, Silica, TiO <sub>2</sub> , SnO <sub>2</sub>	80 - 180 µm
SynMira-Ice YGB924	SM9240	Synthetic Fluorphlogopite, Silica, TiO <sub>2</sub> , SnO <sub>2</sub>	80 - 180 µm
SynMira-Ice BVR849	SM8490	Synthetic Fluorphlogopite, Silica, TiO <sub>2</sub> , SnO <sub>2</sub>	100 - 260 µm
SynMira-Ice BRO848	SM8480	Synthetic Fluorphlogopite, Silica, TiO <sub>2</sub> , SnO <sub>2</sub>	100 - 260 µm
SynMira-Ice VRO847	SM8470	Synthetic Fluorphlogopite, Silica, TiO <sub>2</sub> , SnO <sub>2</sub>	100 - 260 µm
SynMira-Ice ROY846	SM8460	Synthetic Fluorphlogopite, Silica, TiO <sub>2</sub> , SnO <sub>2</sub>	100 - 260 µm
SynMira-Ice ROG845	SM8450	Synthetic Fluorphlogopite, Silica, TiO <sub>2</sub> , SnO <sub>2</sub>	100 - 260 µm
SynMira-Ice YGB844	SM8440	Synthetic Fluorphlogopite, Silica, TiO <sub>2</sub> , SnO <sub>2</sub>	100 - 260 µm



# Usage Guide\*

Approved for use in:

■ Americas ▲ EU ● Asia

Conditionally approved in selected countries:

■ Americas ▲ EU ● Asia

NOT approved for use in:

■ Americas ▲ EU ● Asia

Category	Product Name	Code	Eye	Lip	Face	Nail	Personal Care
WHITE/SILVER PIGMENTS	<b>White/Silver Synthetic Mica Pearl Pigments</b> (please refer to page 1 for a full list of pearl pigments)		■ ▲ ●	■ ▲ ●	■ ▲ ●	■ ▲ ●	■ ▲ ●
INTERFERENCE PIGMENTS	<b>Interference Syn. Mica Pearl Pigments</b> (please refer to page 4-5 for a full list of pearl pigments)		■ ▲ ●	■ ▲ ●	■ ▲ ●	■ ▲ ●	■ ▲ ●
GOLD PIGMENTS	<b>Gold Syn. Mica Pearl Pigments</b> (please refer to page 6 for a full list of pearl pigments)		■ ▲ ●	■ ▲ ●	■ ▲ ●	■ ▲ ●	■ ▲ ●
METALLIC PIGMENTS	<b>Metallic Syn. Mica Pearl Pigments</b> (please refer to page 7 for a full list of pearl pigments)		■ ▲ ●	■ ▲ ●	■ ▲ ●	■ ▲ ●	■ ▲ ●
RED/PINK PIGMENTS	<b>Red/Pink Syn. Mica Pearl Pigments</b> (please refer to page 8-9 for a full list of pearl pigments)		■ ▲ ●	■ ▲ ●	■ ▲ ●	■ ▲ ●	■ ▲ ●
	Sachet Purple Red	S8154	■ ▲ ●	■ ▲ ●	■ ▲ ●	■ ▲ ●	■ ▲ ●
	Fiesta Copper Coral	FCL-CCO	■ ▲ ●	■ ▲ ●	■ ▲ ●	■ ▲ ●	■ ▲ ●
BLUE PIGMENTS	Smokey Vintage Blue	S9014	■ ▲ ●	■ ▲ ●	■ ▲ ●	■ ▲ ●	■ ▲ ●
	Sachet Brilliant Blue	S7883S	■ ▲ ●	■ ▲ ●	■ ▲ ●	■ ▲ ●	■ ▲ ●
	Sachet Caribbean Blue	S6852	■ ▲ ●	■ ▲ ●	■ ▲ ●	■ ▲ ●	■ ▲ ●
	Fiesta Ocean Topaz	FCM-SOT	■ ▲ ●	■ ▲ ●	■ ▲ ●	■ ▲ ●	■ ▲ ●
GREEN PIGMENTS	Sachet Green	S7454	■ ▲ ●	■ ▲ ●	■ ▲ ●	■ ▲ ●	■ ▲ ●
	Sachet Opal Coral-Green	S2972	■ ▲ ●	■ ▲ ●	■ ▲ ●	■ ▲ ●	■ ▲ ●
	Sachet Opal Lemon-Green	S2992	■ ▲ ●	■ ▲ ●	■ ▲ ●	■ ▲ ●	■ ▲ ●
	Smokey Glimmering Enchanted Green	S8991B	■ ▲ ●	■ ▲ ●	■ ▲ ●	■ ▲ ●	■ ▲ ●
	Fiesta Powder Lime/Kiwi	FCF-PK/PL	■ ▲ ●	■ ▲ ●	■ ▲ ●	■ ▲ ●	■ ▲ ●
	Fiesta Smokey Jade	FCM-SJD	■ ▲ ●	■ ▲ ●	■ ▲ ●	■ ▲ ●	■ ▲ ●
PURPLE/VIOLET PIGMENTS	Sachet Lilac	S7254	■ ▲ ●	■ ▲ ●	■ ▲ ●	■ ▲ ●	■ ▲ ●
	Sachet Light Violet	S6439V	■ ▲ ●	■ ▲ ●	■ ▲ ●	■ ▲ ●	■ ▲ ●
	Smokey Glimmering Sunset Purple	S8691B	■ ▲ ●	■ ▲ ●	■ ▲ ●	■ ▲ ●	■ ▲ ●
	Fiesta Frosted Lavender	FCL-FLav	■ ▲ ●	■ ▲ ●	■ ▲ ●	■ ▲ ●	■ ▲ ●
	Fiesta Royal Plum	FCM-SRP	■ ▲ ●	■ ▲ ●	■ ▲ ●	■ ▲ ●	■ ▲ ●
YELLOW/ORANGE PIGMENTS	Sachet TC Swift Yellow	S6909Y	■ ▲ ●	■ ▲ ●	■ ▲ ●	■ ▲ ●	■ ▲ ●
	Fiesta Sunny Yellow	FCL-SY	■ ▲ ●	■ ▲ ●	■ ▲ ●	■ ▲ ●	■ ▲ ●
BLACK/GRAY PIGMENTS	Smokey Vintage Black	S14023	■ ▲ ●	■ ▲ ●	■ ▲ ●	■ ▲ ●	■ ▲ ●
	Sachet Midnight Red	S7844	■ ▲ ●	■ ▲ ●	■ ▲ ●	■ ▲ ●	■ ▲ ●
	Sachet Silver Grey	S9154	■ ▲ ●	■ ▲ ●	■ ▲ ●	■ ▲ ●	■ ▲ ●
DUO-CHROME PIGMENTS	Sachet Duo R/B	S8254	■ ▲ ●	■ ▲ ●	■ ▲ ●	■ ▲ ●	■ ▲ ●
	Sachet Duo VG	S63353	■ ▲ ●	■ ▲ ●	■ ▲ ●	■ ▲ ●	■ ▲ ●
	Fiesta Red Rouge	FCM-RR	■ ▲ ●	■ ▲ ●	■ ▲ ●	■ ▲ ●	■ ▲ ●
	Fiesta Golden Rouge	FCM-GR	■ ▲ ●	■ ▲ ●	■ ▲ ●	■ ▲ ●	■ ▲ ●
	Fiesta Violet Rouge	FCM-VR	■ ▲ ●	■ ▲ ●	■ ▲ ●	■ ▲ ●	■ ▲ ●
COLOR VARIABLE PIGMENTS	<b>Color Travel Syn. Mica Pearl Pigments</b> (please refer to page 12-15 for a full list of color travel pearl pigments)		■ ▲ ●	■ ▲ ●	■ ▲ ●	■ ▲ ●	■ ▲ ●
	SynMira Blue BGG	S8265J	■ ▲ ●	■ ▲ ●	■ ▲ ●	■ ▲ ●	■ ▲ ●
	SynMira Blue GRV	S8269J	■ ▲ ●	■ ▲ ●	■ ▲ ●	■ ▲ ●	■ ▲ ●
	SynMira Blue GVB	S8268J	■ ▲ ●	■ ▲ ●	■ ▲ ●	■ ▲ ●	■ ▲ ●
	SynMira Blue RVB	S8267J	■ ▲ ●	■ ▲ ●	■ ▲ ●	■ ▲ ●	■ ▲ ●
	SynMira Blue VBG	S8266J	■ ▲ ●	■ ▲ ●	■ ▲ ●	■ ▲ ●	■ ▲ ●

**Usage Guide Statement:** The information included in this usage guide is given in good faith and represents our best present state of knowledge but is offered without any guarantee or warranty. It is your responsibility to confirm this information with your regulatory department.

\*There are no particle size limitations when using Synthetic Mica based pigments.

## Sandream Impact - Complete Product Portfolio

Color Effect	White/Silver	Interference	Color	Color Travel	Dispersion
<b>Mica Based Pearl Series</b>					
Chromatique			√		
DP/TC	√	√	√		
Eldorado			√		
Gemini				√	
Impact	√				
Marvel		√	√		
MicaMira				√	
Midnight			√		
Mystic			√		
Optique		√			
<b>Glass Based Pearl Series</b>					
Diamond	√	√	√	√	
Glamour	√	√	√		
GlassMira				√	
<b>Synthetic Fluorhlogopite Based Series</b>					
Fiesta	√	√	√	√	
Sachet	√	√	√		
Smokey			√		
SynMira				√	
<b>Aluminum Based Series</b>					
Alchemique	√		√		
Glitter	√		√	√	
<b>Silver Coated Glass</b>					
Sterling	√				
<b>Magni Series</b>					
Magni-Charged Super			√		
Magni-Mira				√	
<b>illumina Series</b>					
illumina			√		
<b>Glitters &amp; Holographic Series</b>					
Spectra	√		√	√	
Confetti	√		√		
<b>Laser Effect Color Variable</b>					
Fantasy	√		√	√	
<b>Bismuth Oxychloride</b>					
Biluna	√				
Bilunasperse	√				
Bichroma			√		
<b>Powders and Fillers</b>					
Powders and Fillers	√		√		
<b>Naturally Dispersed Pigment Series</b>					
Ecoperse					√
EcoCare					√
<b>Other Pigments</b>					
Carmine			√		
Thermochromatic				√	
Photochromatic				√	
Glow in the Dark			√		
Surface Treated Pearl	√				
<b>Dream Fx Visual Delivery Systems</b>					



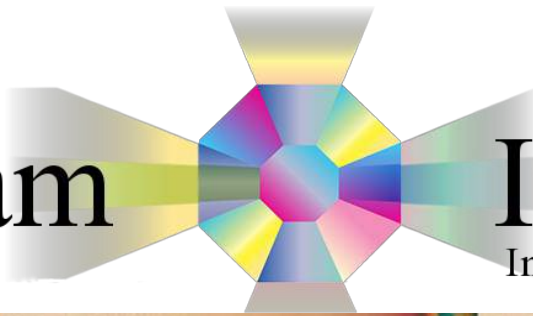
Sandream Impact LLC strives to provide the most updated information about our products. To ensure you have the most updated version of this document, please visit the Literature section of our website: [www.sandreamimpact.com](http://www.sandreamimpact.com)

373 Route 46 W, Building E, Fairfield NJ 07004, USA

**Tel:** +1-973-882-3077 | **Fax:** +1-973-882-3088 | **E:** [info@sandreamimpact.com](mailto:info@sandreamimpact.com) | **W:** [www.sandreamimpact.com](http://www.sandreamimpact.com)

*Last Update June 2018*

Sandream



Impact  
Inspiration Delivered



**SPECIALTY PEARLESCENT PIGMENTS**

Sandream Impact is a leading manufacturer and supplier of innovative effect pigments and unique cosmetic active ingredients. It was formed by the merger of Sandream Enterprises and Impact Colors Inc. January 2016. Our R&D and production site in our U.S. head office offers color matching, new color development, formulation, dispersion and blending and surface treatment services.

Our specialties include color travel pigments on various substrates, fluorphlogopite and aluminum based high definition colors, natural ester dispersed pigments, soft focus, bismuth powders, visual delivery systems and clinically proven anti-aging, whitening and brightening agents. From specialty pearl pigments to technical assistance and product development, Sandream Impact can accommodate the ever changing requirements of its customers in the cosmetic, personal care, plastics, and coatings industries.

For an in depth understanding of our products, visit us at: [www.sandreamimpact.com](http://www.sandreamimpact.com).

## Mission Statement

Sandream Impact LLC delivers a full spectrum of color effect pigments, innovative cosmetic & industrial ingredients and visual delivery systems to the Color Cosmetics, Personal Care, Nutraceuticals, Cosmeceuticals, and Industrial Markets Worldwide. We are a team of passionate and enthusiastic experts focused on providing technically advanced products that will provide our customer base and the consumer marketplace with maximum visual impact and inspiration. We are committed to providing products that are environmentally safe, clean, consistent and effective. We are committed to ethical practices in our dealings with our customers, suppliers, staff and community at large.

## Content List

White Bismuth Oxychloride—Biluna & Bilunasperse Pigments .....	1
Colored Bismuth Oxychloride - Bichroma .....	2
Silver Coated Glass .....	3
Alchemique Colors .....	3
Illumina Series .....	5
Magni Charged Series .....	5
Aluminum Sb Free Glitters Series .....	5
Cosmetic Glitters Holographic .....	6
Fantasy & Spectra Laser Effect Pigments .....	7
Usage Guide .....	8

## White Bismuth Oxychloride - Biluna Pigments

Biluna Pigments are pure Bismuth Oxychloride pigments that impart a rich satiny luster, excellent covering power and optimal compressibility and binding characteristics to cosmetics. Biluna's soft optical effects help to gently diffuse ambient light helping to minimize the appearance of fine lines and wrinkles. Bilunas are available in a variety of particle sizes and bulk densities and are particularly well-suited for long-wearing product applications. Some Biluna pigment grades are UV resistant.



**Biluna 2600 UVS**  
1 - 20 µm



**Biluna 2610 UVS**  
1 - 20 µm



**Biluna Satin UVS**  
1 - 20 µm



**Biluna Silk UVS**  
1 - 20 µm



**Biluna Soft White UVS**  
5 - 20 µm



**Biluna Soft Glitter UVS**  
5 - 20 µm



**Biluna Brilliant Glitter UVS**  
10 - 80 µm



**Biluna Brilliant Sparkle UVS**  
20 - 100 µm

Product	Code	INCI	Particle Size
Biluna 2600 UVS	BW-2600S	Bismuth Oxychloride, PEG-10 Dimethicone, Magnesium Stearate	1 - 20 µm
Biluna 2610 UVS	BW-2610S	Bismuth Oxychloride, PEG-10 Dimethicone, Magnesium Stearate	1 - 20 µm
Biluna Satin UVS	BW-SS	Bismuth Oxychloride	1 - 20 µm
Biluna Silk UVS	BW-601S	Bismuth Oxychloride	1 - 20 µm
Biluna Soft White UVS	BW-IIS	Bismuth Oxychloride	5 - 20 µm
Biluna Soft Glitter UVS	BW-IS	Bismuth Oxychloride	5 - 50 µm
Biluna Brilliant Glitter UVS	BW-SuS	Bismuth Oxychloride	10 - 80 µm
Biluna Brilliant Sparkle UVS	BW-1015S	Bismuth Oxychloride	20 - 100 µm

## Bilunasperse Pigments

Product	Code	INCI	Particle Size
Bilunasperse CO-60	BV-CO-60	Bismuth Oxychloride, Castor Oil, Isododecane, Cosmetic Waxes	<15 µm
Bilunasperse NC-25	BW-MK25	Bismuth Oxychloride, Butyl Acetate, Nitrocellulose, Isopropyl Alcohol	10 - 14 µm
Bilunasperse NC-60	BW-MK60	Bismuth Oxychloride, Butyl Acetate, Nitrocellulose Isopropyl Alcohol	10 - 14 µm

\*The pictures above are a representative selection of our pearl pigments. The additional products listed in the table differ primarily in particle size, where a wide selection of images would be redundant. The basic color appearance will remain consistent across the particle size spectra.

## Colored Bismuth Oxychloride - Bichroma



**Bichroma Diamond**  
5 - 80 µm



**Bichroma Diamond Ultra**  
5 - 80 µm



**Bichroma Diamond Ultra Lite** 5 - 80 µm



**Bichroma Diamond Ultra White** 5 - 80 µm



**Bichroma Black**  
0.5 - 15 µm



**Bichroma Brown**  
0.5 - 30 µm



**Bichroma Magenta**  
2 - 15 µm



**Bichroma Green**  
2 - 20 µm



**Bichroma Light Blue**  
2 - 25 µm



**Bichroma Aqua**  
2 - 30 µm



**Bichroma Yellow**  
2 - 30 µm



**Bichroma Red**  
2 - 40 µm



**Bichroma Dark Blue**  
4 - 30 µm



**Bichroma Violet**  
4 - 30 µm



**Bichroma Dorado**  
10 - 60 µm



**Bichroma Purple**  
4 - 40 µm

Our Bichroma Colors Series offer a vibrant collection of colors based on Bismuth Oxychloride, and a Primary Colorant coated onto a small particle Mica. The result is a very elegant soft color with outstanding coverage and blurring allowing imperfections to disappear under a soft veil of primary color. The Bichroma Colors are the ideal base for eye shadows, lip color, or facial foundations of inspired beauty.

Product	Code	INCI	Particle Size
Bichroma Diamond	MBC-D1	Bismuth Oxychloride, Mica	5 - 80 µm
Bichroma Diamond Ultra	MBC-D2	Bismuth Oxychloride, Mica	5 - 80 µm
Bichroma Diamond Ultra Lite	MBC-D4	Bismuth Oxychloride, Mica	5 - 80 µm
Bichroma Diamond Ultra White	MBC-D3	Bismuth Oxychloride, Mica, Titanium Dioxide	5 - 80 µm
Bichroma Black	MBC-B	Bismuth Oxychloride, Mica, Iron Oxides, Magnesium Stearate	0.5 - 15 µm
Bichroma Brown	MBC-Br	Bismuth Oxychloride, Mica, Iron Oxides, Magnesium Stearate	0.5 - 30 µm
Bichroma Magenta	MBC-Mag	Bismuth Oxychloride, Mica, Carmine, Magnesium Stearate	2 - 15 µm
Bichroma Green	MBC-G	Bismuth Oxychloride, Mica, Chromium Oxide Greens, Calcium Stearate	2 - 20 µm
Bichroma Light Blue	MBC-LB	Bismuth Oxychloride, Mica, Ferric Ammonium Ferrocyanide, Calcium Stearate	2 - 25 µm
Bichroma Aqua	MBC-A	Bismuth Oxychloride, Mica, Chromium Hydroxide Green, Magnesium Stearate	2 - 30 µm
Bichroma Yellow	MBC-Y	Bismuth Oxychloride, Mica, Iron Oxides, Magnesium Stearate	2 - 30 µm
Bichroma Red	MBC-R	Bismuth Oxychloride, Mica, Iron Oxides	2 - 40 µm
Bichroma Dark Blue	MBC-DB	Bismuth Oxychloride, Mica, Ferric Ammonium Ferrocyanide, Magnesium Stearate	4 - 30 µm
Bichroma Violet	MBC-V	Bismuth Oxychloride, Mica, Manganese Violet, Magnesium Stearate	4 - 30 µm
Bichroma Purple	MBC-P	Bismuth Oxychloride, Mica, Ultramarines, Magnesium Stearate	4 - 40 µm
Bichroma Dorado	MBC-D	Bismuth Oxychloride, Mica, Titanium Dioxide, Iron Oxides, Magnesium Stearate	10 - 60 µm

## Silver Coated Glass

Our silver coated glass pigments offer a new effect brought to you by the insight of Sandream Impact!

We take pure glass flake from calcium and sodium borosilicate and provide a vapor deposition coating of pure silver! The result is an elegantly brilliant and totally reflective mirror-like surface that dramatically catches and reflects the surrounding colors providing an infinitely unique effect to a wide variety of color cosmetics.



**Sterling Fine Silver**  
10 - 60 µm



**Sterling Shimmer Silver**  
20 - 100 µm



**Sterling Super Sparkling Silver**  
40 - 220 µm



**Sterling Super Glittering Silver**  
70 - 280 µm



**Sterling Sparkling Silver**  
80 - 200 µm



**Sterling Super Galaxy Silver**  
100 - 600 µm

Product	Code	INCI	Particle Size
Sterling Fine Silver	S032	Al. Ca. Na. Silicate, Silver	10 - 60 µm
Sterling Shimmer Silver	S022	Al. Ca. Na. Silicate, Silver	20 - 100 µm
Sterling Super Shimmer Silver	S2046	Al. Ca. Na. Silicate, Silver	20 - 100 µm
Sterling Flash Silver	S042	Al. Ca. Na. Silicate, Silver	30 - 150 µm
Sterling Super Sparkling Silver	S2086	Al. Ca. Na. Silicate, Silver	40 - 220 µm
Sterling Super Glittering Silver	S5156	Al. Ca. Na. Silicate, Silver	70 - 280 µm
Sterling Sparkling Silver	S012	Al. Ca. Na. Silicate, Silver	80 - 200 µm
Sterling Super Galaxy Silver	S5256	Al. Ca. Na. Silicate, Silver	100 - 600 µm

\*The Sterling Colors are made from Silver and are approved only for externally applied cosmetics including the eye area in Europe and only the Nails in the US. They are not approved for ingestible products such as lipsticks.

## Alchemique Colors

Alchemique Pigments transform common flaked Al. Powders into a magical collection of dramatic colors ranging from gold, silver, bronze and copper to the rich colors of cobalt, topaz and jade!

This rich collection of effects provides deep, true colors independent of the underlying skin tones normally acquired from the transparent qualities of typical effect pigments.



**Alchemique Silver**  
10 - 80 µm



**Alchemique Shimmer Silver**  
50 - 80 µm



**Alchemique Flash Silver**  
50 - 150 µm

Product	Code	INCI	Particle Size
Alchemique Silver	AMM-SS	Al. Powder, SiO <sub>2</sub>	10 - 80 µm
Alchemique Shimmer Silver	AMM-SHS	Al. Powder, Silica	50 - 80 µm
Alchemique Flash Silver	AMM-SFS	Al. Powder, Silica	50 - 150 µm

# Alchemique Colors



**Alchemique Smooth Gold**  
10 - 50 µm



**Alchemique Smooth Orange**  
10 - 50 µm



**Alchemique Blaze Red**  
30 - 60 µm



**Alchemique Luxury Gold**  
30 - 60 µm



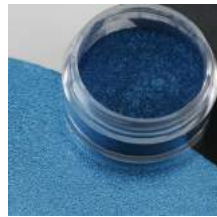
**Alchemique Amber**  
30 - 60 µm



**Alchemique Gold**  
30 - 60 µm



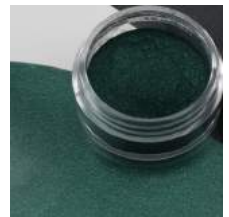
**Alchemique Copper**  
30 - 60 µm



**Alchemique Topaz**  
30 - 60 µm



**Alchemique Jade**  
30 - 60 µm



**Alchemique Emerald**  
30 - 60 µm



**Alchemique Shimmer Luxury Gold**  
50 - 80 µm



**Alchemique Shimmer Luxury Copper**  
50 - 80 µm



**Alchemique Shimmer Amber**  
50 - 80 µm



**Alchemique Shimmer Topaz**  
50 - 80 µm



**Alchemique Shimmer Gold**  
50 - 80 µm



**Alchemique Shimmer Copper**  
50 - 80 µm



**Alchemique Shimmer Jade**  
50 - 80 µm



**Alchemique Shimmer Emerald**  
50 - 80 µm

Product	Code	INCI	Particle Size
Alchemique Smooth Gold	AMM-SMG	Aluminium Powder, SiO <sub>2</sub> , Iron Oxides	10 - 50 µm
Alchemique Smooth Orange	AMM-SMO	Aluminium Powder, SiO <sub>2</sub> , Iron Oxides	10 - 50 µm
Alchemique Blaze Red	AMM-BR	Aluminium Powder, SiO <sub>2</sub> , Iron Oxides	30 - 60 µm
Alchemique Luxury Gold	AMM-LG	Aluminium Powder, SiO <sub>2</sub> , Iron Oxides	30 - 60 µm
Alchemique Amber	AMM-AM	Aluminium Powder, SiO <sub>2</sub> , Iron Oxides	30 - 60 µm
Alchemique Gold	AMM-3Y15	Al. Powder, Iron Oxides, Silica	30 - 60 µm
Alchemique Copper	AMM-3O15	Al. Powder, Iron Oxides, Silica	30 - 60 µm
Alchemique Topaz	AMM-3B15	Al. Powder, Ferric Ferrocyanide, Silica	30 - 60 µm
Alchemique Jade	AMM-3G15	Al. Powder, Iron Oxides, Ferric Ferrocyanide, Silica	30 - 60 µm
Alchemique Emerald	AMM-3G17	Al. Powder, Iron Oxides, Ferric Ferrocyanide, Silica	30 - 60 µm
Alchemique Shimmer Luxury Gold	AMM-SLG	Aluminium Powder, SiO <sub>2</sub> , Iron Oxides	50 - 80 µm
Alchemique Shimmer Luxury Copper	AMM-SLC	Aluminium Powder, SiO <sub>2</sub> , Iron Oxides	50 - 80 µm
Alchemique Shimmer Amber	AMM-SA	Aluminium Powder, SiO <sub>2</sub> , Iron Oxides	50 - 80 µm
Alchemique Shimmer Topaz	AMM-6B15	Al. Powder, Ferric Ferrocyanide, Silica	50 - 80 µm
Alchemique Shimmer Gold	AMM-6Y15	Al. Powder, Iron Oxides, Silica	50 - 80 µm
Alchemique Shimmer Copper	AMM-6O15	Al. Powder, Iron Oxides, Silica	50 - 80 µm
Alchemique Shimmer Jade	AMM-6G15	Al. Powder, Iron Oxides, Ferric Ferrocyanide, Silica	50 - 80 µm
Alchemique Shimmer Emerald	AMM-6G17	Al. Powder, Iron Oxides, Ferric Ferrocyanide, Silica	50 - 80 µm

## illumina Series



**Illumina Yellow**



**Illumina Coral**



**Illumina Orange**



**Illumina Pink**



**Illumina Hot Pink**

Product	Code	INCI	Particle Size
Illumina Yellow	SD4505	Bis (Glycidoxyphenyl) propane / Bisamionmethyl-nonbornane Copolymer, Aluminum Hydroxide, Yellow 10, Synthetic Fluorophlogopite, TiO <sub>2</sub> , Tin Oxide	10 - 45 µm
Illumina Coral	SD4501B	Bis (Glycidoxyphenyl) propane / Bisamionmethyl-nonbornane Copolymer, Titanium Dioxide, Synthetic Fluorophlogopite, Aluminum Hydroxide, Red 28, Red 22, Yellow 10, Tin Oxide	10 - 45 µm
Illumina Orange	SD4501A	Bis (Glycidoxyphenyl) propane / Bisamionmethyl-nonbornane Copolymer, TiO <sub>2</sub> , Synthetic Fluorophlogopite, Aluminum Hydroxide, Red 28, Red 22, Yellow 10, Tin Oxide	10 - 45 µm
Illumina Pink	SD4502	Bis (Glycidoxyphenyl) propane / Bisamionmethyl-nonbornane Copolymer, TiO <sub>2</sub> , Synthetic Fluorophlogopite, Aluminum Hydroxide, Red 28, Red 22, Tin Oxide	10 - 45 µm
Illumina Hot Pink	SD4503	Bis (Glycidoxyphenyl) propane / Bisamionmethyl-nonbornane Copolymer, TiO <sub>2</sub> , Synthetic Fluorophlogopite, Aluminum Hydroxide, Red 28, Red 22, Tin Oxide	10 - 45 µm

## Magni-Charged Series

Product	Code	INCI	Particle Size
Magni-Charged Super Red	MG2029	Mica, Titanium Dioxide, Iron Oxide, Tin Oxide	10 - 60 µm
Magni-Charged Super Gold	MG2019	Mica, Titanium Dioxide, Iron Oxide, Tin Oxide	10 - 60 µm
Magni-Charged Super Green	MG2059	Mica, Titanium Dioxide, Iron Oxide, Tin Oxide	10 - 60 µm
Magni-Charged Super Violet	MG2039	Mica, Titanium Dioxide, Iron Oxide, Tin Oxide	10 - 60 µm
Magni-Charged Super Blue	MG2049	Mica, Titanium Dioxide, Iron Oxide, Tin Oxide	10 - 60 µm
Magni-Mira VRO	MG-VRO	Synthetic Fluorophlogopite, Iron Oxides, Titanium Dioxide, Tin Oxide, Silica	20 - 80 µm
Magni-Mira GBV	MG-GBV	Synthetic Fluorophlogopite, Iron Oxides, Titanium Dioxide, Tin Oxide, Silica	20 - 80 µm
Magni-Mira ROY	MG-ROY	Synthetic Fluorophlogopite, Iron Oxides, Titanium Dioxide, Tin Oxide, Silica	20 - 80 µm
Magni-Mira TVR	MG-TVR	Synthetic Fluorophlogopite, Iron Oxides, Titanium Dioxide, Tin Oxide, Silica	20 - 80 µm

## Aluminum Based Glitters Sb Free Series



**Glitter Pure Silver**  
1/128", 1/64", 1/32"HEX



**Glitter Pure Turquoise**  
1/128", 1/64", 1/32"HEX



**Glitter Pure Black**  
1/128", 1/64", 1/32"HEX

Product	Code	INCI	Particle Size
Glitter Pure Silver	GL0017	Polysilicon-1 Crosspolymer; Al. Powder	1/128", 1/64", 1/32"HEX
Glitter Pure Turquoise	GL4037	Polysilicon-1 Crosspolymer; Al. Powder; Blue 1	1/128", 1/64", 1/32"HEX
Glitter Pure Black	GL9057	Polysilicon-1 Crosspolymer; Al. Powder; Black 2	1/128", 1/64", 1/32"HEX

## Cosmetic Glitters - Holographic Series



**Spectra Flash Silver**  
0.004"SQ/12



**Spectra Galaxy Silver**  
0.008"HEX/12



**Spectra Flash Gold**  
0.004"SQ/12



**Spectra Galaxy Gold**  
0.008"HEX/12



**Spectra Shimmer Pink**  
0.004"HEX/25



**Spectra Galaxy Purple**  
0.008"HEX/25



**Spectra Galaxy Green-Gold**  
0.008"HEX/25



**Spectra Black**  
1/128", 1/64"HEX



**Spectra Red**  
1/128"HEX



**Spectra Turquoise**  
1/128"HEX



**Spectra Mirror Silver**  
70 - 280 µm



**Spectra Kaleidoscope**  
35/0.6 µm



**Confetti Pink**  
50-300 µm



**Confetti Silver**  
50-200 µm



**Confetti White**  
50-200 µm



**Confetti Light Pink**  
50-300 µm



**Confetti Bronze**  
50-200 µm



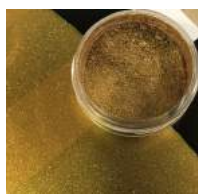
**Confetti Rose Gold**  
50-200 µm



**Confetti Light Gold**  
50-250 µm

Product	Code	INCI	Particle Size
Spectra Flash Silver	PS0404	PET, Al. Powder	0.004"SQ/12
Spectra Galaxy Silver	PS0808	PET, Al. Powder	0.008"HEX/12
Spectra Flash Gold	PG0404	PET, Al. Powder, Yellow 5, Red 40	0.004"SQ/12
Spectra Galaxy Gold	PG0808	PET, Al. Powder, Yellow 5, Red 40	0.008"HEX/12
Spectra Shimmer Pink	SP0858	PET, Al. Powder, Polyurethane-11, Red 7	0.006HEX/25
Spectra Galaxy Purple	SP0838	PET, Al. Powder, Polyurethane-11, Ferric Ferrocyanide, Red 7	0.008"HEX/25
Spectra Shimmer Purple	SP0868	PET, Al. Powder, Polyurethane-11, Ferric Ferrocyanide, Red 7	0.008"HEX/25
Spectra Galaxy Green-Gold	SP0828	PET, Al. Powder, Polyurethane-11, Red 7, Yellow 5	0.008"HEX/25
Spectra Turquoise	SP0877	Polysilicon-1 Crosspolymer, Al. Powder, PET, Blue 1	1/128"HEX
Spectra Red	SP0847	Polysilicon-1 Crosspolymer, Al. Powder, PET, Red 40	1/128"HEX
Spectra Black	SP0817	Polysilicon-1 Crosspolymer, Al. Powder, PET, Black 2	1/128", 1/64"HEX
Spectra Mirror Silver	PS0856	Polyethylene Terephthalate, Al. Powder; Al.Ca.Na Silicate; Silver	70 - 280 µm
Spectra Mirror Gold	PG0856	Polyethylene Terephthalate, Al. Powder; Al.Ca.Na Silicate; Silver; Yellow 5; Red 40	70 - 280 µm
Confetti Pink	GA1701	Al. Ca. Na. Silicate, Titanium Dioxide, Tin Oxide, Carmine, Polybutylene Terephthalate, Acrylates Copolymer, Ethylene/VA Copolymer	50-300 µm
Confetti Silver	GA1702	Al. Ca. Na. Silicate, Titanium Dioxide, Tin Oxide, Titanium/Titanium Dioxide, Polybutylene Terephthalate, Acrylates Copolymer, Ethylene/VA Copolymer	50-200 µm
Confetti White	GA1703	Al. Ca. Na. Silicate, Titanium Dioxide Tin Oxide, Polybutylene Terephthalate, Acrylates Copolymer, Ethylene/VA Copolymer	50-200 µm
Confetti Light Pink	GA1704	Al. Ca. Na. Silicate, Titanium Dioxide, Tin Oxide, Carmine, Polybutylene Terephthalate, Acrylates Copolymer, Ethylene/VA Copolymer	50-300 µm
Confetti Bronze	GA1705	Al. Ca. Na. Silicate, Iron Oxides Polybutylene Terephthalate, Acrylates Copolymer, Ethylene/VA Copolymer	50-200 µm
Confetti Rose Gold	GA1706	Al. Ca. Na. Silicate, Iron Oxides Silica, Polybutylene Terephthalate, Acrylates Copolymer, Ethylene/VA Copolymer	50-200 µm
Confetti Light Gold	GA1707	Al. Ca. Na. Silicate, Titanium Dioxide, Iron Oxides, Tin Oxide, Polybutylene Terephthalate, Acrylates Copolymer, Ethylene/VA Copolymer	50-250 µm

## Fantasy Laser Effect Pigments



**Fantasy Gold**  
10 - 65 µm



**Fantasy Orange**  
10 - 65 µm



**Fantasy Midnight**  
10 - 65 µm



**Fantasy Orange Red**  
10 - 85 µm



**Fantasy Purple**  
10 - 85 µm



**Fantasy Shimmer Blue**  
10 - 125 µm



**Fantasy Forest Green**  
10 - 125 µm



**Fantasy Antique Blue**  
10 - 125 µm



**Fantasy Violet Red**  
10 - 125 µm



**Fantasy Brilliant Blue**  
10 - 165 µm



**Fantasy Sunny Yellow**  
10 - 165 µm



**Fantasy Flash Silver**  
10 - 165 µm



**Fantasy Mirror**  
40 - 220 µm



**Fantasy Mosaic**  
100 - 1000 µm

Product	Code	INCI	Particle Size
Fantasy Gold	FM3081	Acrylates Copolymer, Al. Powder, Mica, Iron Oxides, Silica	10 - 60 µm
Fantasy Orange	FM9620	Acrylates Copolymer, Al. Powder, Mica, Iron Oxides, Silica	10 - 60 µm
Fantasy Midnight	FS6335	Acrylates Copolymer, Al. Powder, Synthetic Fluorophlogopite, Titanium Dioxide, Iron Oxides, Ferric Ferrocyanide	10 - 100 µm
Fantasy Orange Red	FS5542	Synthetic Fluorophlogopite, F <sub>2</sub> O <sub>3</sub> , Acrylates Copolymer, Al. Powder	10 - 85 µm
Fantasy Purple	FM5191B	Mica, TiO <sub>2</sub> , Ferric Ferrocyanide, SnO <sub>2</sub> , Acrylates Copolymer, Al. Powder	10 - 85 µm
Fantasy Maroon	FS4121	Synthetic Fluorophlogopite, TiO <sub>2</sub> , Ferric Ferrocyanide, SnO <sub>2</sub> , Iron Oxides, Acrylates Copolymer, Al. Powder	10 - 125 µm
Fantasy Shimmer Blue	FA6152B	Al. Powder, Ferric Ferrocyanide, Silica, Acrylates Copolymer	10 - 125 µm
Fantasy Forest Green	FA3172G	Al. Powder, Ferric Ferrocyanide, Silica, Iron Oxides, Acrylates Copolymer	10 - 125 µm
Fantasy Antique Blue	FM6602	Mica, Iron Oxides, TiO <sub>2</sub> , Acrylates Copolymer, Al. Powder	10 - 125 µm
Fantasy Violet Red	FS7841	Synthetic Fluorophlogopite, TiO <sub>2</sub> , Ferric Ferrocyanide, SnO <sub>2</sub> , Iron Oxides, Acrylates Copolymer, Al. Powder	10 - 125 µm
Fantasy Brilliant Blue	FS7883S	Synthetic Fluorophlogopite, TiO <sub>2</sub> , Ferric Ferrocyanide, SnO <sub>2</sub> , Acrylates Copolymer, Al. Powder	10 - 165 µm
Fantasy Sunny Yellow	FS6419Y	Synthetic Fluorophlogopite, TiO <sub>2</sub> , Yellow 5 Al Lake, SnO <sub>2</sub> , Acrylates Copolymer, Al. Powder	10 - 165 µm
Fantasy Flash Silver	FA8152S	Al. Powder, Silica, Acrylates Copolymer	10 - 165 µm
Fantasy Mirror	FS2086	Al. Ca. Na. Silicate, Silver, Acrylates Copolymer, Al. Powder	40 - 220 µm
Fantasy Mosaic	FS5256	Al. Ca. Na. Silicate, Silver, Acrylates Copolymer, Al. Powder	100 - 1000 µm

## Spectra Laser Effect Pigments

Product	Code	INCI	Particle Size
Spectra Kaleidoscope	PT0635	Acrylates Copolymer (and) Al. Powder [CI: 77000]	35/0.6 µm

\*Silver is approved only for externally applied cosmetics including the eye area in Europe and only the Nails in the US. It is not approved for ingestible products such as lipsticks.

# Usage Guide\*

Approved for use in:  
■ Americas ▲ EU ● Asia

Conditionally approved in selected countries:  
■ Americas ▲ EU ● Asia

NOT approved for use in:  
■ Americas ▲ EU ● Asia

Category	Product	Code	Eye			Lip			Face			Nail			Personal Care			
BILUNA	please refer to page 1 for a full list of pearl pigments		■	▲	●	■	▲	●	■	▲	●	■	▲	●	■	▲	●	
BILUNASPERSE	please refer to page 1 for a full list of pearl pigments		■	▲	●	■	▲	●	■	▲	●	■	▲	●	■	▲	●	
	Bilunasperse NC-25	BW-MK25	■	▲	●	■	▲	●	■	▲	●	■	▲	●	■	▲	●	
BICHROMA COLORS PIGMENTS	please refer to page 3 for a full list of pearl pigments		■	▲	●	■	▲	●	■	▲	●	■	▲	●	■	▲	●	
	Bichroma Light Blue/Dark Blue	MBC-LB/DB	■	▲	●	■	▲	●	■	▲	●	■	▲	●	■	▲	●	
SILVER COATED GLASS STERLING PIGMENTS	please refer to page 4 for a full list of pearl pigments		■	▲	●	■	▲	●	■	▲	●	■	▲	●	■	▲	●	
ALCHEMIQUE PIGMENTS	please refer to page 4-5 for a full list of pearl pigments		■	▲	●	■	▲	●	■	▲	●	■	▲	●	■	▲	●	
ALUMINUM BASED SB-FREE SERIES	please refer to page 6 for a full list of pearl pigments		■	▲	●	■	▲	●	■	▲	●	■	▲	●	■	▲	●	
Magni-Charged Series	please refer to page 6 for a full list of pearl pigments		■	▲	●	■	▲	●	■	▲	●	■	▲	●	■	▲	●	
ILLUMINA SERIES	Illumina Yellow	SD4505	■	▲	●	■	▲	●	■	▲	●	■	▲	●	■	▲	●	
	Illumina Coral	SD4501B	■	▲	●	■	▲	●	■	▲	●	■	▲	●	■	▲	●	
	Illumina Orange	SD4501A	■	▲	●	■	▲	●	■	▲	●	■	▲	●	■	▲	●	
	Illumina Pink	SD4502	■	▲	●	■	▲	●	■	▲	●	■	▲	●	■	▲	●	
	Illumina Hot Pink	SD4503	■	▲	●	■	▲	●	■	▲	●	■	▲	●	■	▲	●	
	Spectra Flash Silver	PS0404	■	▲	●	■	▲	●	■	▲	●	■	▲	●	■	▲	●	
	Spectra Galaxy Silver	PS0808	■	▲	●	■	▲	●	■	▲	●	■	▲	●	■	▲	●	
	Spectra Flash Gold	PG0404	■	▲	●	■	▲	●	■	▲	●	■	▲	●	■	▲	●	
	Spectra Galaxy Gold	PG0808	■	▲	●	■	▲	●	■	▲	●	■	▲	●	■	▲	●	
	Spectra Shimmer Pink	SP0858	■	▲	●	■	▲	●	■	▲	●	■	▲	●	■	▲	●	
COSMETIC GLITTERS	Spectra Galaxy Purple	SP0838	■	▲	●	■	▲	●	■	▲	●	■	▲	●	■	▲	●	
	Spectra Shimmer Purple	SP0868	■	▲	●	■	▲	●	■	▲	●	■	▲	●	■	▲	●	
	Spectra Galaxy Green-Gold	SP0828	■	▲	●	■	▲	●	■	▲	●	■	▲	●	■	▲	●	
	Spectra Turquoise	SP0877	■	▲	●	■	▲	●	■	▲	●	■	▲	●	■	▲	●	
	Spectra Red	SP0847	■	▲	●	■	▲	●	■	▲	●	■	▲	●	■	▲	●	
	Spectra Black	SP0817	■	▲	●	■	▲	●	■	▲	●	■	▲	●	■	▲	●	
	Spectra Mirror Silver	PS0856	■	▲	●	■	▲	●	■	▲	●	■	▲	●	■	▲	●	
	Spectra Mirror Gold	PG0856	■	▲	●	■	▲	●	■	▲	●	■	▲	●	■	▲	●	
	LASER EFFECT COLOR TRAVEL PIGMENTS	Spectra Kaleidoscope	PT0635	■	▲	●	■	▲	●	■	▲	●	■	▲	●	■	▲	●
	FANTASY LASER EFFECT COLOR TRAVEL PIGMENTS	Fantasy Purple	FS4121	■	▲	●	■	▲	●	■	▲	●	■	▲	●	■	▲	●
Fantasy Orange Red		FS7883S	■	▲	●	■	▲	●	■	▲	●	■	▲	●	■	▲	●	
Fantasy Maroon		FA3172G	■	▲	●	■	▲	●	■	▲	●	■	▲	●	■	▲	●	
Fantasy Shimmer Blue		FS5542	■	▲	●	■	▲	●	■	▲	●	■	▲	●	■	▲	●	
Fantasy Forest Green		FM5191B	■	▲	●	■	▲	●	■	▲	●	■	▲	●	■	▲	●	
Fantasy Antique Blue		FA6152B	■	▲	●	■	▲	●	■	▲	●	■	▲	●	■	▲	●	
Fantasy Violet Red		FS6419Y	■	▲	●	■	▲	●	■	▲	●	■	▲	●	■	▲	●	
Fantasy Brilliant Blue		FM6602	■	▲	●	■	▲	●	■	▲	●	■	▲	●	■	▲	●	
Fantasy Sunny Yellow		FA8152S	■	▲	●	■	▲	●	■	▲	●	■	▲	●	■	▲	●	
Fantasy Flash Silver		FS7841	■	▲	●	■	▲	●	■	▲	●	■	▲	●	■	▲	●	
Fantasy Mirror		FS2086	■	▲	●	■	▲	●	■	▲	●	■	▲	●	■	▲	●	
Fantasy Mosaic		FS5256	■	▲	●	■	▲	●	■	▲	●	■	▲	●	■	▲	●	

**Usage Guide Statement:** The information included in this usage guide is given in good faith and represents our best present state of knowledge but is offered without any guarantee or warranty. It is your responsibility to confirm this information with your regulatory department.

## Sandream Impact - Complete Product Portfolio

Color Effect	White/Silver	Interference	Color	Color Travel	Dispersion
<b>Mica Based Pearl Series</b>					
Chromatique			√		
DP/TC	√	√	√		
Eldorado			√		
Gemini				√	
Impact	√				
Marvel		√	√		
MicaMira				√	
Midnight			√		
Mystic			√		
Optique		√			
<b>Glass Based Pearl Series</b>					
Diamond	√	√	√	√	
Glamour	√	√	√		
GlassMira				√	
<b>Synthetic Fluorhlogopite Based Series</b>					
Fiesta	√	√	√	√	
Sachet	√	√	√		
Smokey			√		
SynMira				√	
<b>Aluminum Based Series</b>					
Alchemique	√		√		
Glitter	√		√	√	
<b>Silver Coated Glass</b>					
Sterling	√				
<b>Magni Series</b>					
Magni-Charged Super			√		
Magni-Mira				√	
<b>illumina Series</b>					
illumina			√		
<b>Glitters &amp; Holographic Series</b>					
Spectra	√		√	√	
Confetti	√		√		
<b>Laser Effect Color Variable</b>					
Fantasy	√		√	√	
<b>Bismuth Oxychloride</b>					
Biluna	√				
Bilunasperse	√				
Bichroma			√		
<b>Powders and Fillers</b>					
Powders and Fillers	√		√		
<b>Naturally Dispersed Pigment Series</b>					
Ecoperse					√
EcoCare					√
<b>Other Pigments</b>					
Carmine			√		
Thermochromatic				√	
Photochromatic				√	
Glow in the Dark			√		
Surface Treated Pearl	√				
<b>Dream Fx Visual Delivery Systems</b>					



*Sandream Impact LLC strives to provide the most updated information about our products. To ensure you have the most updated version of this document, please visit the Literature section of our website: [www.sandreamimpact.com](http://www.sandreamimpact.com)*

373 Route 46 W, Building E, Fairfield NJ 07004, USA

**Tel:** +1-973-882-3077 | **Fax:** +1-973-882-3088 | **E:** [info@sandreamimpact.com](mailto:info@sandreamimpact.com) | **W:** [www.sandreamimpact.com](http://www.sandreamimpact.com)