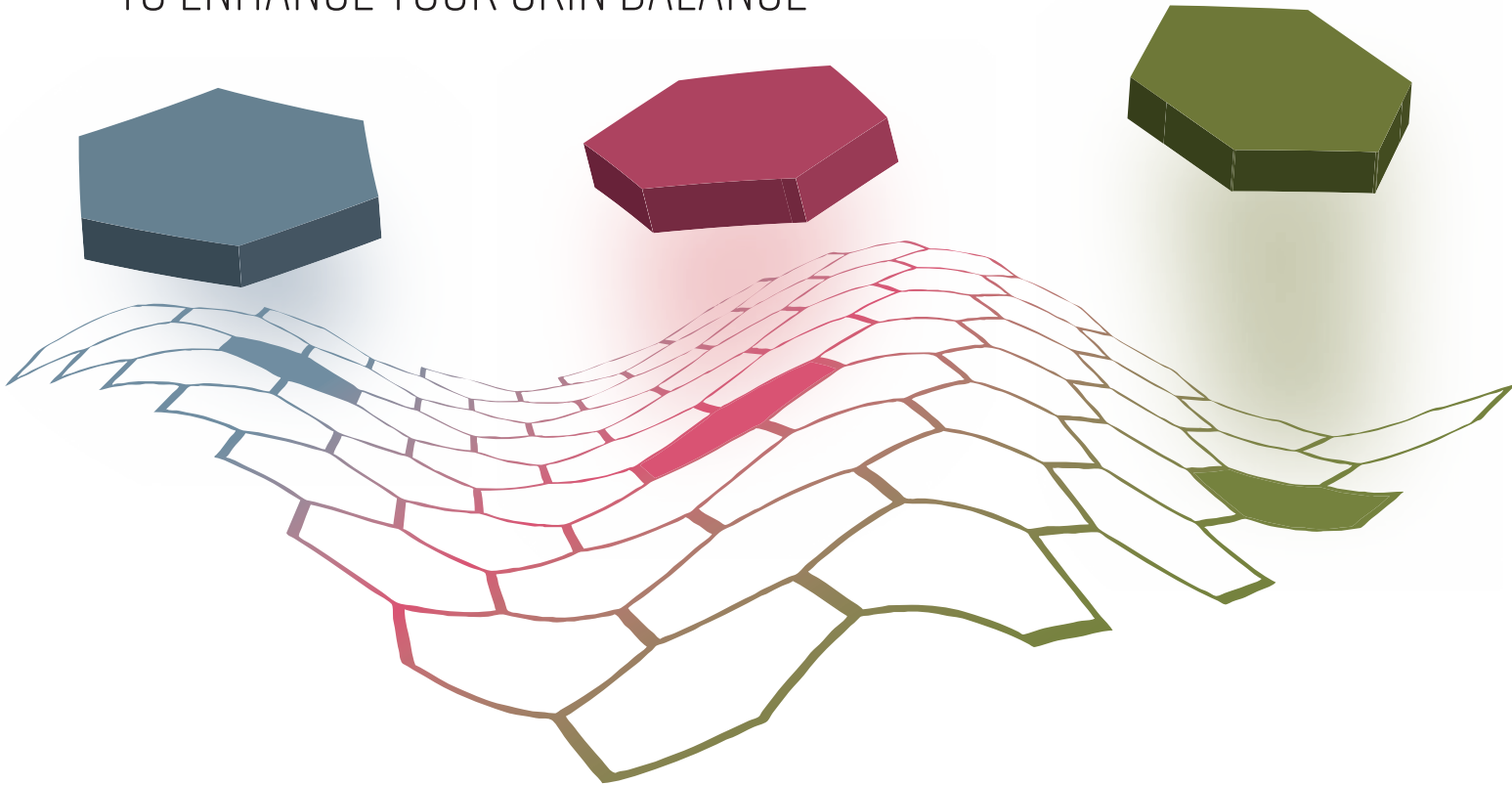


EPHYLA  
Natural Active Design



# OUR PHILOSOPHY:

A RESPONSIBLE AND BIOMIMICRY INSPIRED APPROACH  
TO ENHANCE YOUR SKIN BALANCE



# OUR THREE PILLARS OF INNOVATION :

## ETHICAL SOURCING



RESPONSIBLE AND ETHICAL APPROACHES  
STRONG PARTNERSHIPS WITH LOCAL PRODUCERS  
SOCIO ECONOMIC LONG TERM IMPACT  
RESPECT AND PRESERVATION OF ECOSYSTEMS  
UPCYCLING AND CIRCULAR ECONOMY

## NATURAL ACTIVE INGREDIENT DESIGN



BIOMIMICRY INSPIRED R&D  
SUSTAINABLE SOURCING  
ORIGINAL METABOLIC PATHWAYS  
INNOVATIVE BIOMINERAL VECTORIZATION  
SKIN BALANCE ENHANCEMENT

## TECHNICALLY ADVANCED FORMULATION SYSTEMS



MINERAL SYSTEM MODIFICATION  
COLD PROCESS  
PHYSICAL EMULSION  
SECOND SKIN CONCEPT  
DRUG DELIVERY SYSTEMS



We are deeply involved in the early stages of field sourcing in West Africa, French Guiana Amazon Rainforest, French Polynesia as well as France. We prioritize **STRONG PARTNERSHIPS WITH LOCAL PRODUCERS** with the greatest attention to the **LONG TERM IMPACT** of our involvement. Our team has more than twenty years' experience in that area. The raw materials selected by Ephyla always follow very strict specifications with regard to **ENVIRONMENTAL MANAGEMENT, SOCIO ECONOMIC IMPACT** and product quality management. We follow and apply exclusively **RESPONSIBLE AND ETHICAL APPROACHES**, the **RESPECT AND PRESERVATION** of ecosystems, upcycling and **CIRCULAR ECONOMY**. Our investment in ethical sourcing projects is not just philanthropic. We see it as the best guarantee for long term supply and quality insurance.

**14 000 HECTARES OF ECO-CERTIFIED LAND IN WEST AFRICA**



ETHICAL  
SOURCING





# DESERT DATE OIL



A precious oil stemming from a responsible and ethical approach at the heart of Sahel.

The Desert Date oil naturally contains a high rate of essential fatty acids associated with unsaponifiables which confers antioxidant, regenerating and repairing properties with regard to the skin and hair. The Desert Date oil provides an unique dry-touch and quick penetration.

**INCI** : Balanites roxburghii seed oil

**FORM** : liquid

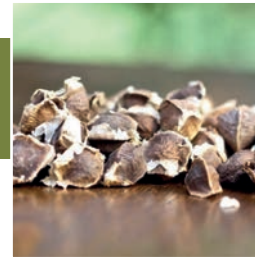
**PROPERTIES** : regenerating, repairing, dry touch

**SOURCING** : Sahel Region (Burkina Faso)





# MORINGA OIL



Moringa Oil has a unique composition of arachidic and behenic acid which make it particularly indicated for the treatment of problem skin thanks to the rebalancing of the seborrheic composition. Its excellent stability against oxidation make him an excellent oil for make-up products. The Moringa Oil provides a unique velvety touch and quick penetration.

**INCI** : Moringa oleifera seed oil

**FORM** : liquid

**PROPERTIES** : rebalancing, wound healing, softening and emollient properties, velvet touch

**SOURCING** : Sahel Region (Burkina Faso)





# BAOBAB OIL



Several vitamins, including vitamins A, D, E and F, are present in baobab oil. Vitamins A and F are polyunsaturated fatty acids directly implicated in the rejuvenation and renewal of cell membranes, while vitamin E is a superior anti-oxidant. Baobab oil is ideal to help treat dry and damaged skin, it is used for intensive hair care and its soothing properties are helpful for eczema and psoriasis treatments. It is strongly non-siccative and has a demonstrated longer shelf-life than many other natural seed oils.

**INCI** : Adansonia digitata seed oil

**FORM** : liquid

**PROPERTIES** : moisturizing, soothing, nourishing, protecting against hair and skin damage

**SOURCING** : West Africa (Senegal)







# KOKUM BUTTER



A precious butter stemming from a responsible approach at the heart of tropical rain forests of Western Ghats (India).

Kokum Butter has a smooth and dense texture. Kokum butter is extremely easy to formulate and it does not recrystallize in granular form.

It absorbs quickly into the skin and leaves no greasy residue. Kokum Butter provides great benefits in term of moisturizing and emollient properties both to the skin and hair. It helps in restoring skin elasticity.

Kokum butter naturally contains antioxidant molecules which provide high oxidative stability.

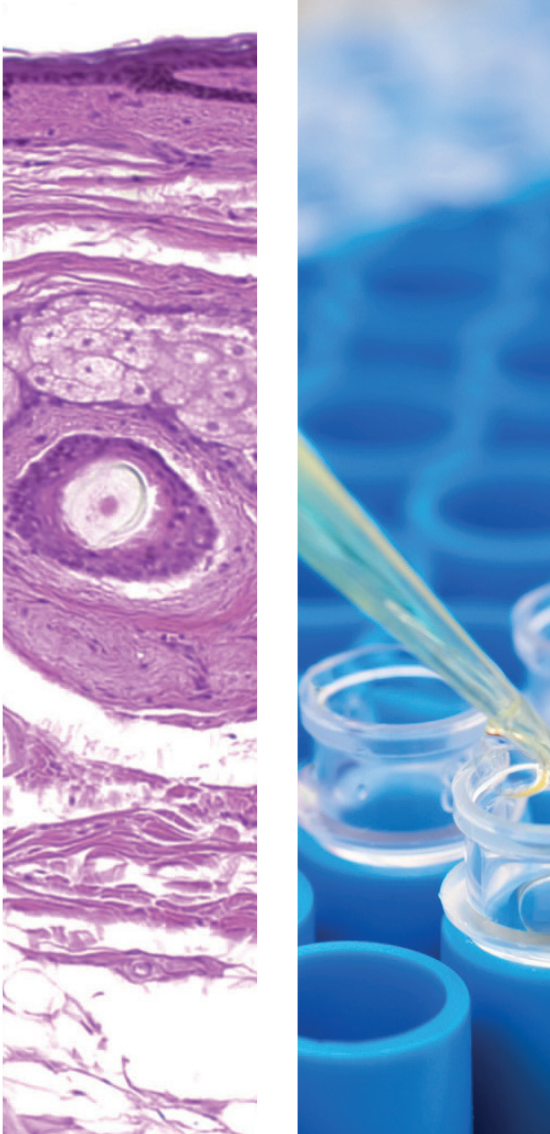
**INCI** : Garcinia indica seed butter

**FORM** : solid at  $T < 38^{\circ}\text{C}$

**PROPERTIES** : moisturizing, emollient, restore skin elasticity, no greasy residue, easy to formulate since it does not recrystallize

**SOURCING** : Western Ghats (India)





Ephyla's R&D is very much inspired by **BIOMIMICRY**. It consists in using nature's genius to solve human problems. The solutions and techniques developed for millions of years in the biggest lab there is, Nature itself, are investigated and implemented to get the best of both Nature and Technology.

**SUSTAINABLE SOURCING**, green advanced extraction techniques, **ORIGINAL METABOLIC PATHWAYS** and **INNOVATIVE BIOMINERAL VECTORIZATION** are at very heart our approach in order to **PRESERVE AND INCREASE SKIN BALANCE**.

Our portfolio meets the principal demands of the cosmetic market, including anti-aging and soothing active ingredients, skin regeneration, anti-stretchmarks, melanogenesis control, skin radiance enhancement, microcirculation improvement, Skin disorders Restoring, photo protection and many more.



# NATURAL ACTIVE INGREDIENT DESIGN





# YOUTH PRESERVING AND RESTORING

## REVERTIME

**INCI:** Montmorillonite & Ulva lactuca extract

**FORM:** powder (preservative free)

**PROPERTIES:** stimulation of collagen synthesis, anti-elastase, antiaging, antioxidant

**SOURCING:** Brittany (France)

## BOROHYAL

**INCI:** Bentonite & Borojoa patinoi fruit juice

**FORM:** powder (preservative free)

**PROPERTIES:** Inhibition of cellular senescence, stimulation of the hyaluronic acid synthesis, antioxidant, anti-aging

**SOURCING:** Sahel Region (Burkina Faso)





# YOUTH PRESERVING AND RESTORING

## HTRE A BIOMIMETIC SHIELD FOR THE PROTECTION OF HAIR, NAILS AND SKIN

The *Canarium luzonicum* oleoresin extract presents a crude skeleton of pentacyclic triterpenes represented mostly by Amyrine in the  $\alpha$  and  $\beta$  form. The resin shows protective activity against UV radiation, especially UVA. Ex vivo tests have shown keratin protection and film forming ability on both hair and skin.

Moreover, HTRE is able to inhibit Phospholipase A2, the key enzyme of the inflammatory process.

**INCI** : Helianthus annuus seed oil & Canarium luzonicum gum nonvolatiles

**FORM** : oil soluble viscous liquid

**PROPERTIES** : film forming properties, anti-inflammatory properties, UVA absorption

**SOURCING** : Amazonian Rainforest (French Guiana)





# LIGHTENING & ANTI-DARK SPOT

## LIGHTDERM

Why are hand palms and foot soles lighter than the rest of the body skin? This natural physiological regulation is called palmoplantar inhibition. Lightderm, derived from a byproduct of the Desert Date Oil production, is able to modulate the melanin synthesis reproducing this same natural metabolic pathway.

## LIGHTDERM

**INCI:** Bentonite & Balanites roxburghii seed oil

**FORM:** powder (preservative free)

## LIGHTDERM Gly

**INCI:** glycerin & Balanites roxburghii seed oil

**FORM:** water-soluble viscous liquid

**PROPERTIES:** lightening, anti-dark spot

**SOURCING:** West Africa (Burkina Faso)





# HIGHLIGHTER & ANTI-HYPERPIGMENTATION

## EPHYSHINE

Postinflammatory hyperpigmentation results from the overproduction of melanin or an irregular dispersion of pigment. This rise in melanocyte activity has been shown to be stimulated by inflammatory mediators.

Ephyshine reduces effectively skin dysfunctions related to cellular stress and stop hyperpigmentation. Ephyshine illuminates the skin while protecting it from UV rays and have an excellent soothing activity for our skin cells.

**EPHYSHINE PI** **INCI**: Dimethyl Isosorbide & Propanediol & Aqua & Caesalpinia sappan  
**FORM**: water-soluble liquid

**EPHYSHINE PS** **INCI**: Propanediol & Sorbitol & Aqua & Caesalpinia sappan  
**FORM**: water-soluble liquid



**PROPERTIES**: highlighter, anti-hyperpigmentation

**SOURCING**: Africa (Cameroon)





# SKIN REGENERATION & ANTI STRETCH-MARKS

## REGENERYL

An active ingredient serving the tissue engineering. Synergy of a natural biomineral functionalized with Borojo and Ulva lactuca extracts, lead Regeneryl to stimulate effectively the extracellular dermis matrix in order to create an enabling environment for cellular recolonization.

Regeneryl also provides the maintaining of two fundamental parameters, the elasticity and the « youth » of cells.

**INCI** : Montmorillonite & Borojoa patinoi fruit juice & Ulva lactuca extract

**FORM** : powder (preservative free)

**PROPERTIES** : repairing, restructuring, anti stretch-marks

**SOURCING** : France & South America







# SKIN DISORDERS RESTORING

## SENSITEAM Be

Sensiteam effectively reinforces the skin natural protection against lipo- peroxidation in order to provide the protection of cell membranes.

Thanks to stimulation of endothelin production, the most powerful vasoconstrictors known, pathogenic agent causing skin infections are quickly confined and effectively removed by lymphatic vessels. Sensiteam is very effective in order to restore skin disorders and reduce dark circles caused by dysfunctions of the blood and lymphatic circulation.

**INCI** : Bentonite & Lannea microcarpa fruit extract

**FORM** : powder (preservative free)

**PROPERTIES** : anti-acne, vasoconstricting, Microcirculation Improvement

**SOURCING** : West Africa (Burkina Faso)





# LIPOPHILIC, STABLE & EFFECTIVE FORM OF VITAMIN C

## VITAMIN C TETRA E

Vitamin C Tetra E has a purity  $> 98\%$ . Ascorbyl tetraisopalmitate has a penetration ability three times greater than ascorbic acid and it shows better results even if it is used at doses 25 times lower than those of ascorbic acid. Ascorbyl tetraisopalmitate proven activities include: ability to neutralize ROS at the cellular level thanks to free radical scavenging activity, anti-aging effects, collagen booster; effective photo-protection, improvement in skin radiance by reducing melanin production.

**INCI:** Ascorbyl tetraisopalmitate or Tetrahexyldecyll ascorbate

**FORM:** oil-soluble viscous liquid

**PROPERTIES:** anti-aging, highlightening, collagen strengthening, free radical scavenging, photoprotection

**SOURCING:** 100% designed and manufactured in France





# A VEGAN NATURAL STIMULATOR OF VDR PROTEINS

## VITAMIN D3-LIKE

Most of the vitamin D humans rely upon, is produced in the skin through exposure to sunlight. Vitamin D insufficiency affects almost 50% of the population worldwide. The main reason is the reduction of regular sun exposure due to of urbanization and the wide-scale adoption of indoor lifestyles or the use of sunscreen cosmetic products.

Using a biotechnological process applied to the grape, EPHYLA extracts the Vitamin D3 -LIKE which is able to stimulate the VDR proteins just like the cholecalciferol ( the biological activated version of the Vitamin D, VDR3).

VDR proteins proven activities include: skin differentiation and proliferation, photo protection, wound healing, anti-microbial effects, postnatal maintenance of the hair follicle.

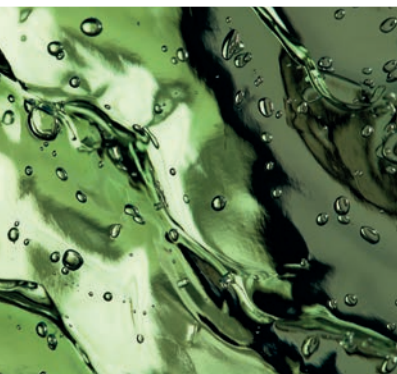
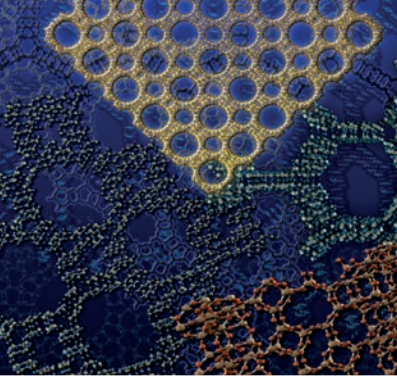
**INCI** : Aqua & Sodium citrate & Saccharomyces/Grape ferment extract & Sodium benzoate

**FORM** : water soluble liquid

**PROPERTIES** : VDR protein stimulation, free radical scavenging activity, anti-aging, anti-inflammatory

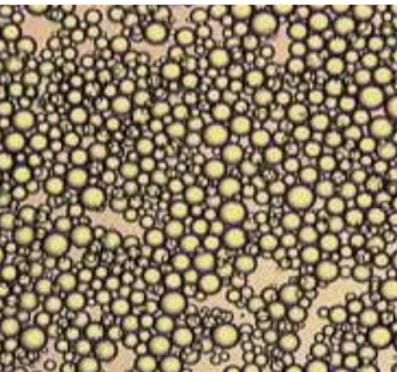
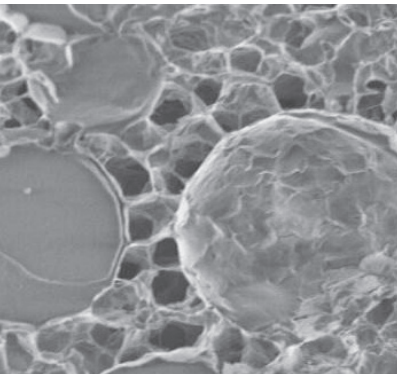
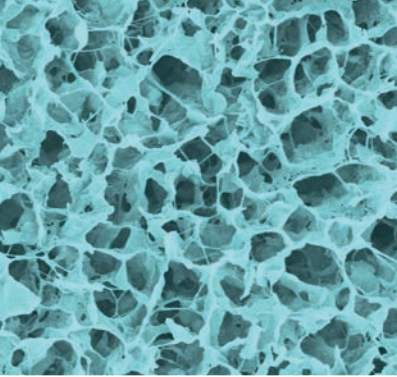
**SOURCING** : 100% French Vine





Ephyla has developed and patented new, technologically advanced, **FORMULATION SPECIALTIES** based on a perfect **SYNERGY BETWEEN PHYSICS AND BIOLOGY**.

At Ephyla we have a deep knowledge in term of mineral system modification with organic molecules. **COLD PROCESS** emulsion, **ENCAPSULATION** systems, **PICKERING EMULSIONS** with unique sensoriality, **SECOND SKIN CONCEPT**, **DRUG DELIVERY** systems, **SPF BOOSTERS** are the key concepts et very heart of our approach.



# TECHNICALLY ADVANCED FORMULATION SYSTEMS





# FRAMETIME TECHNOLOGY

Frametime is a **natural colloidal stabilizer** obtained by using an organic-modified natural clay. A technology able to stabilize an O/W emulsion using a cold mechanical process. A notable gain in terms of time and energy saving.

**OIL PHASE ENCAPSULATION:** Frametime forms a layer preventing the coalescence of oil droplets. The oil phase is thus completely encapsulated into the mineral structure

**WATER PHASE PROTECTION:** Frametime creates a 3D network in the continuous phase like an honey-comb structure.

**SECOND SKIN CONCEPT:** Creation of the mineral structure like a second skin able to deliver in a controlled manner the oil & water phases thanks to the creation of a labyrinth path. Frametime technology respects the natural skin's barrier layer since it does not modify the surface tension of the epidermal layer.

**MAKE-UP PROPERTIES:** increase pigment dispersibility, increase the water proofing effect, Soft-focus effect

**SUNSCREEN APPLICATIONS:** SPF booster in synergy with organic and or mineral-based sunscreen





# OLO 3D TECHNOLOGY

## OIL-GELLING FORMER

OLO 3D is a vegetable origin organic modified bentonite clay. OLO 3D is a rheological additive designed to create a gel structure (like a colloidal suspension) into an oil phase. OLO 3D is very versatile, it is suitable for low medium up to high polar systems.

**INCI:** Stearalkonium Bentonite

**FORM:** oil-dispersible powder (preservative free);

viscous gel: pre-dispersed in oil phase (on demand)

**PROPERTIES:** stability improvement for Make-up formulation, silky feeling, thixotropy properties, pigments dispersion improvement and settling prevention, W/O Emulsion stabilization by using a cold emulsification process, water-resistance improvement for make-up application, SPF sun protection factor enhancement, eliminate oil migration.

**SOURCING:** Europe





[www.ephyla.fr](http://www.ephyla.fr)



[contact@ephyla3.com](mailto:contact@ephyla3.com)



+33 (0)2 97 44 61 40



Cosmetic designed by Ephyla, inspired by Nature